

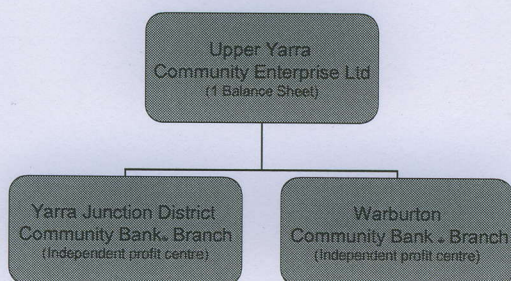
Yarra Junction District Community Bank - Branch

- 203 branches across Australia has proven the CB concept. 9 within the Shire of Yarra Ranges.
- The Yarra Junction community has been a peripheral beneficiary of neighbouring branches including Woori Yallock, Wandin/Seville and most significantly, Warburton. Understandably – they want one.
- Strong demand demonstrated by pledges in excess of \$800k and a positive outcome from feasibility study.

Partnership

- Reduce duplication of set-up and ongoing costs and resources.
- Eliminate competition between communities & risks to viability of either.
- Provide a presence in The Valley's retail hub offering greater accessibility to a much broader Market.

Partnership Model



Bonus Share Issue to Create Par Value of Shares

	Value of Enterprise	Number of Shares	Real Value of Each Share
Warburton 2000 Branch Opening	\$400,000	400,000	\$1
Warburton 2007 After Independent Valuation (July)	\$1.2 million	400,000	\$3
Warburton 2007 After Bonus issue of 800,000 to existing shareholders (Oct)	\$1.2 million	1.2 million	\$1
Yarra Junction 2007 (Subject to final prospectus)	\$800,000	800,000	\$1
Upper Yarra Community Enterprise Ltd	\$2 million	2 million	\$1

The Process

- Yarra Junction Awareness Campaign
 - Pledge Raising
 - Feasibility Study
 - Modelling of Two-Site Structure
 - Merging of YJ Steering Committee & Warburton Board
 - Valuation of Existing Company
 - Bonus Share Issue
 - Business Plan
 - Secure Premises
 - Due Diligence Process
 - Prospectus Preparation
 - Prospectus Launch
 - Allocation of Shares
 - Staff Recruitment
 - Site Fit-out
 - Yarra Junction Branch Opening
- ← You Are Here

The Company Name Change

From
Warburton Community Financial Services Ltd

To
Upper Yarra Community Enterprise Ltd

- To better reflect the wider geographical area of service.
- To indicate activity beyond financial services.
- To recognise the broader-based ownership and relevance of the company.