



28 Lawson Crescent, Thomastown, Vic.3074

P.O. Box 80, Bundoora, Vic. 3083

Email: [info@mountrommel.com](mailto:info@mountrommel.com)

Web : [www.mountrommel.com](http://www.mountrommel.com)

14 April 2016

## CLUNES GOLDFIELD

At the present time, Mount Rommel owns 100% of the tenure to gold at Clunes.

In Victoria, the Government issues licences to clarify rights to prospective gold, but production approvals come through different State agencies.

Year 2017 will be the 60th year of exploration for gold around Clunes in the modern era.

Many people coming to Clunes in recent years know it to be an old gold town -- the "First Gold Town" - giving little thought to a possible gold revival.

After February, 2015, press evidence shows results from drilling came as a surprise to those who thought gold mining at Clunes belonged to the Past.

The continued excellence of drilling results have indeed generated a potential for the further development of this old gold-field.

### **Why should anyone be surprised ???**

Here at Clunes there is a rare strip of ground. It cannot be moved, and its history cannot be re-written.

**Less than 100 metres wide by about 2,800 metres in length, this rare strip so far has produced gold to the value of over two billion A-dollars at current prices.**

Understanding where gold remains in this strip is the present objective - the same understanding providing the guide to the places where gold can be recovered in the future.

Drill holes in "the right location" leads to good results - we learn this only after the hole is completed, and the assays available.

The poster attached is an illustration to show where different kinds of search has taken place over many years.

The work of Mount Rommel has confirmed there are two parts of Clunes Goldfield likely to reward prospectors in the future.

Modern-day interest based on assays of core from diamond drilling is quality data, controlled as to location. The drilled part within the area once prized as the property of the old Port Phillip Gold Mining Company, north of Creswick's Creek has been shown to be so highly prospective, and is worthy of development drilling.

In addition to that work, Mount Rommel has assembled and consolidated early mining data, in order to appreciate the location of workings on gold.

These Clunes mines were abruptly closed - a story of deception already well told. What's worth re-telling is that **at the close, gold was repeatedly being found** along at least 400 strike metres, just west of Templeton Street, south of Alliance Street.

On the poster below, Templeton Street is marked, as is drilling further north. It can be stated with total confidence that -

1. The completed drilling west of Templeton Street shown on this poster is all the drilling which has been carried out, ever.
2. **No drilling marked on this poster was positioned to test where those 1892 workings were having such recorded success.**

It follows, one clearly defined prospect for the future is to reveal the continuation of the gold-bearing veins being found for the first time in the South Clunes United gold mine, in the year before the field has a whole hit forced closure.

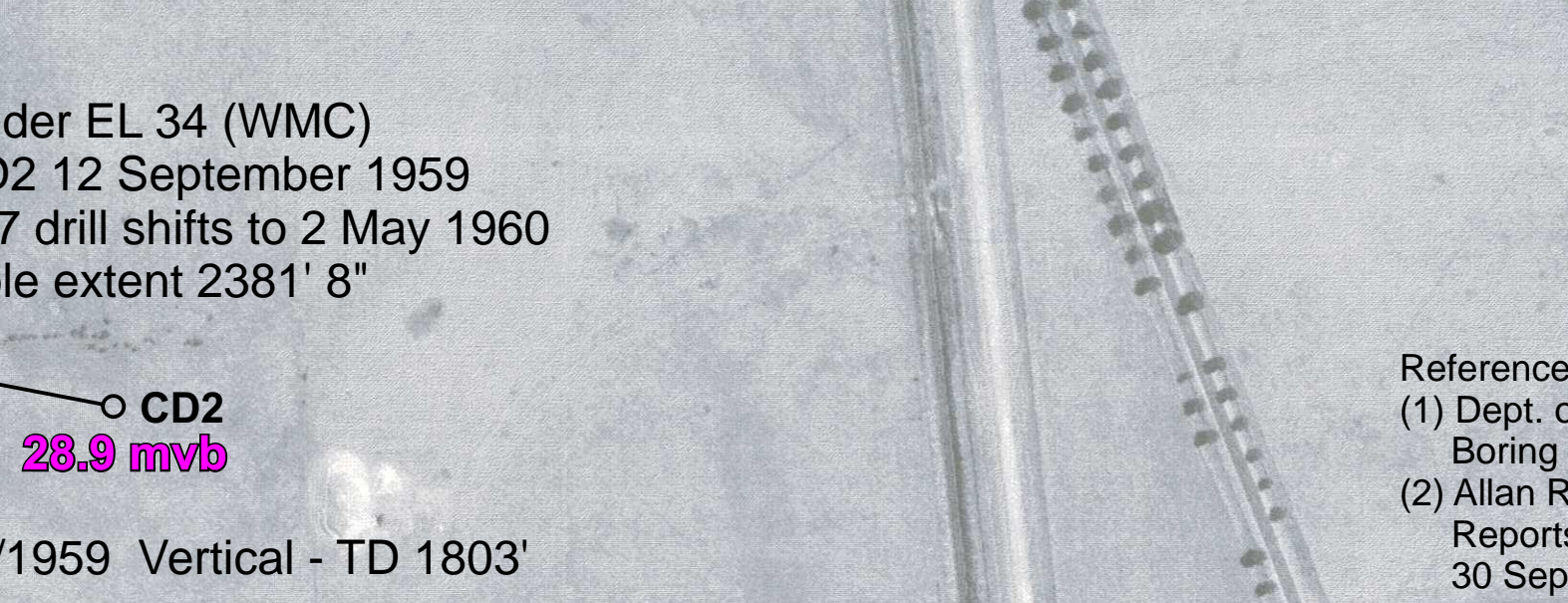
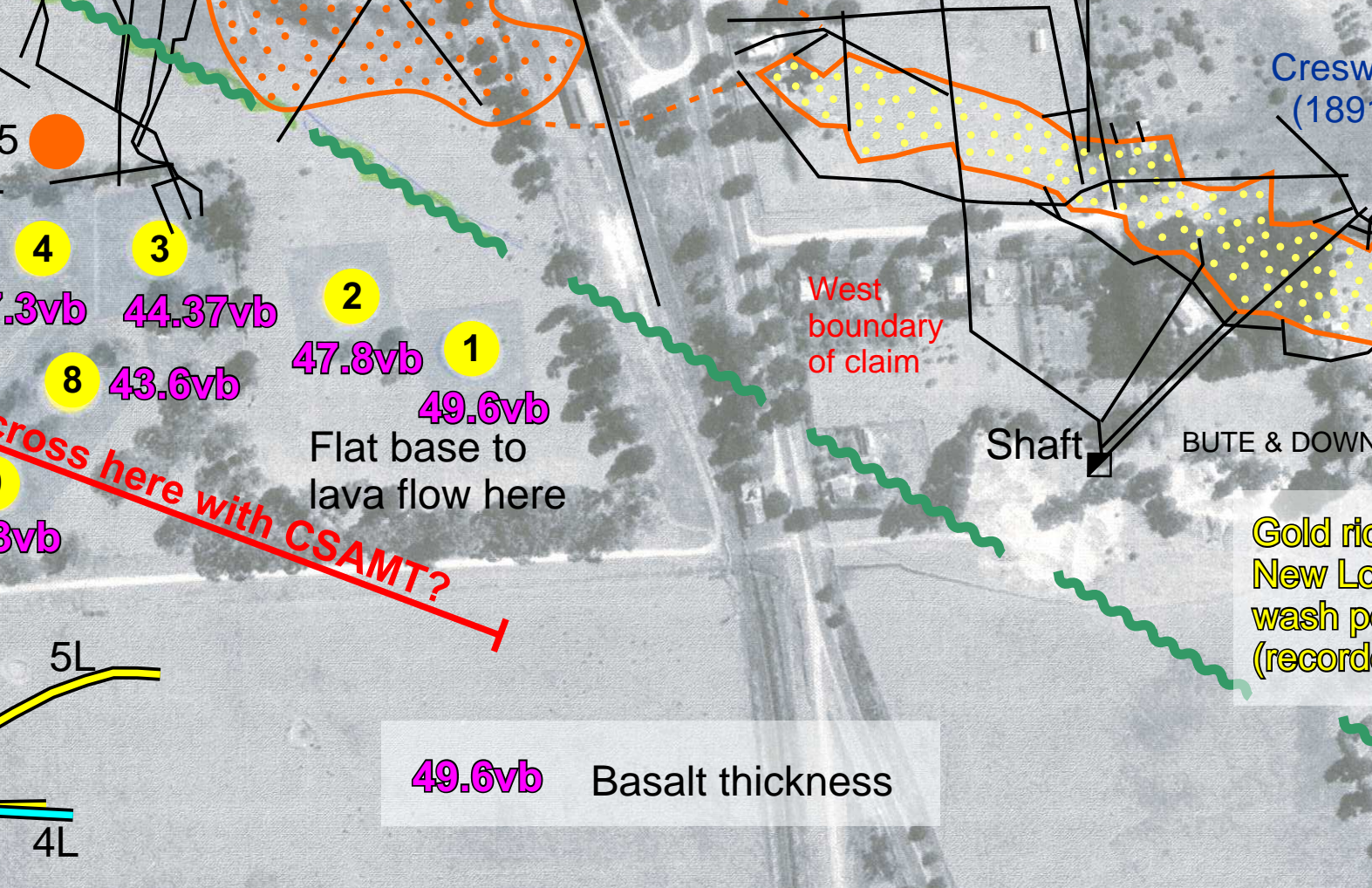
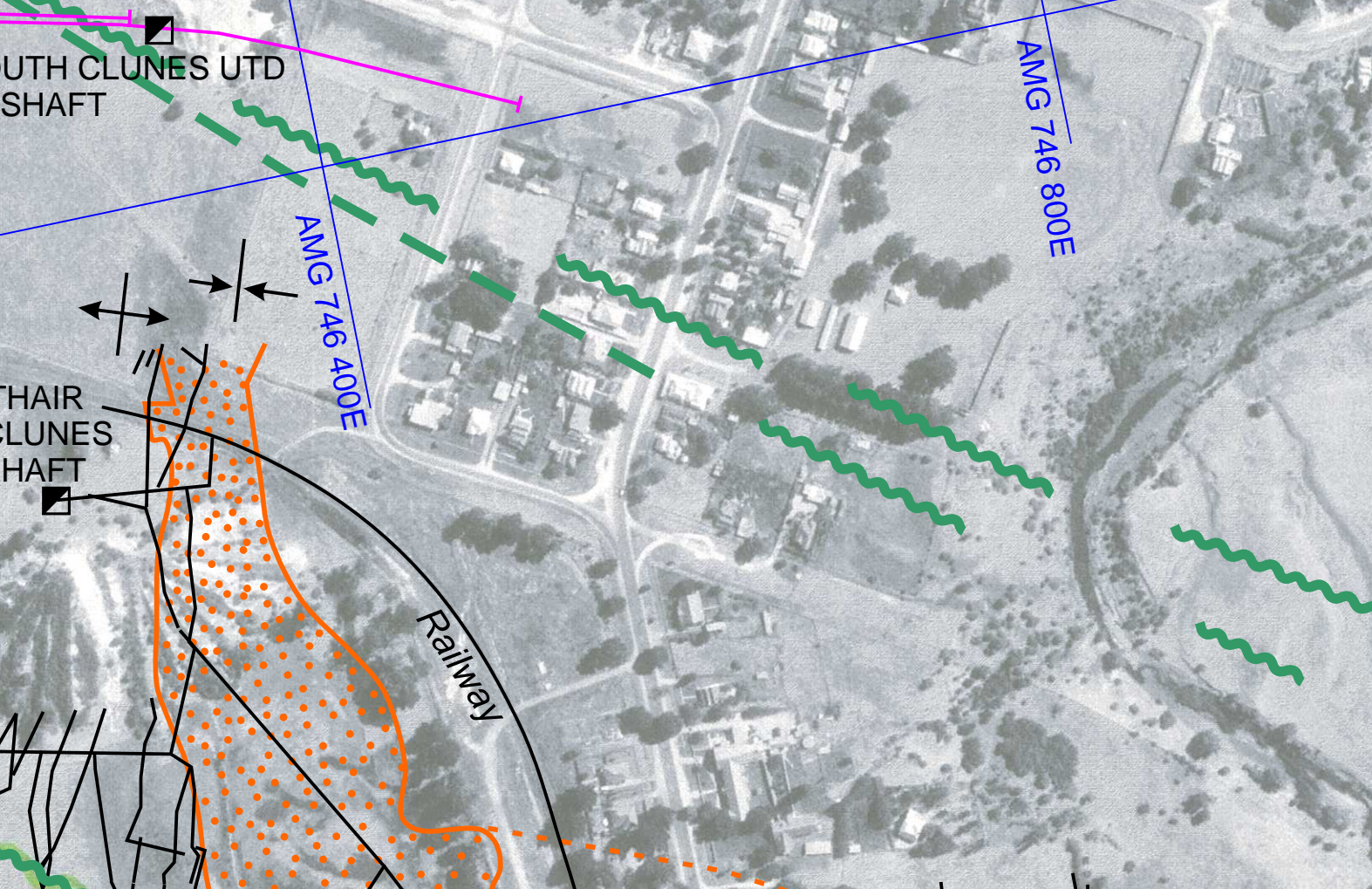
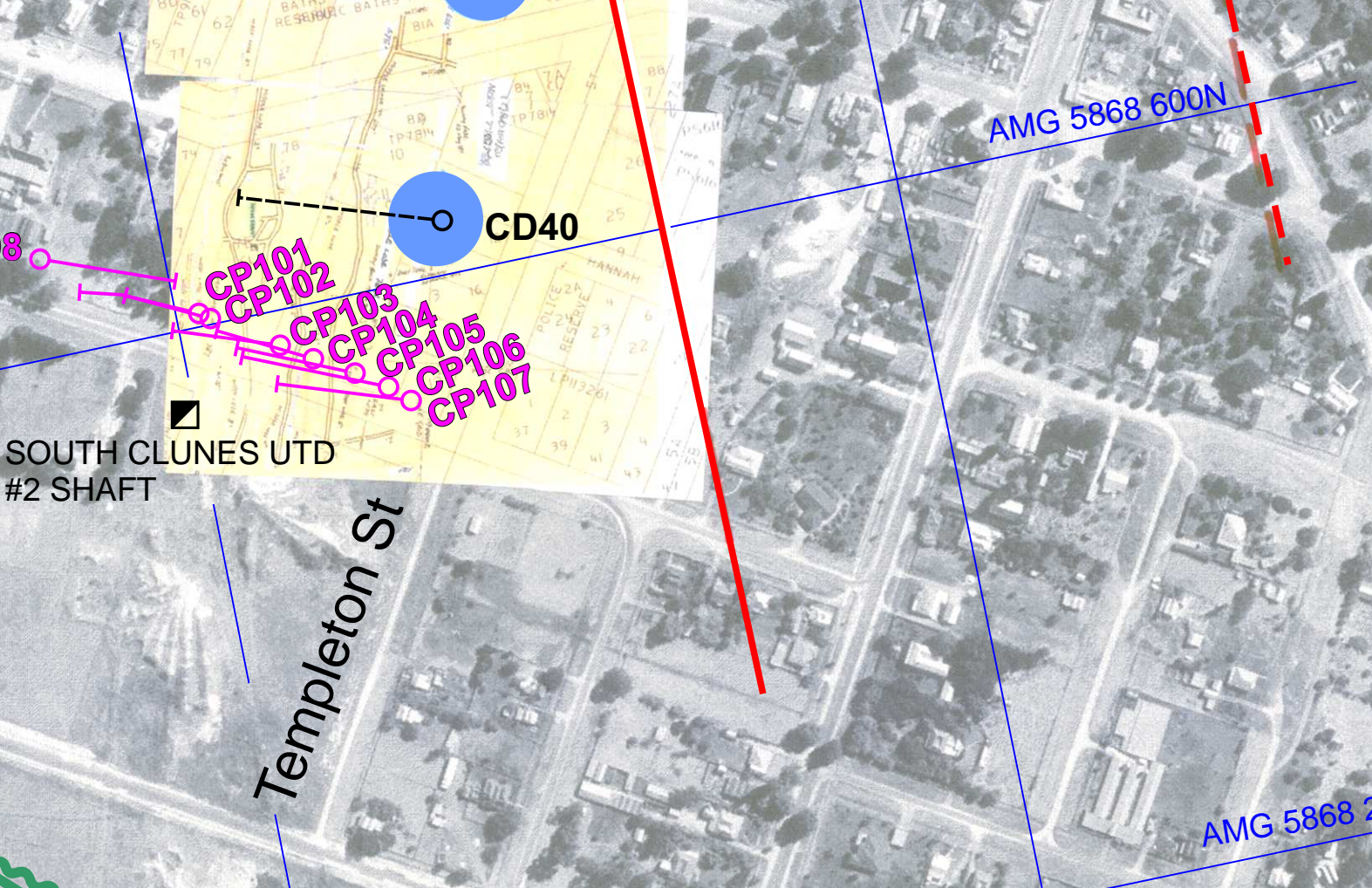
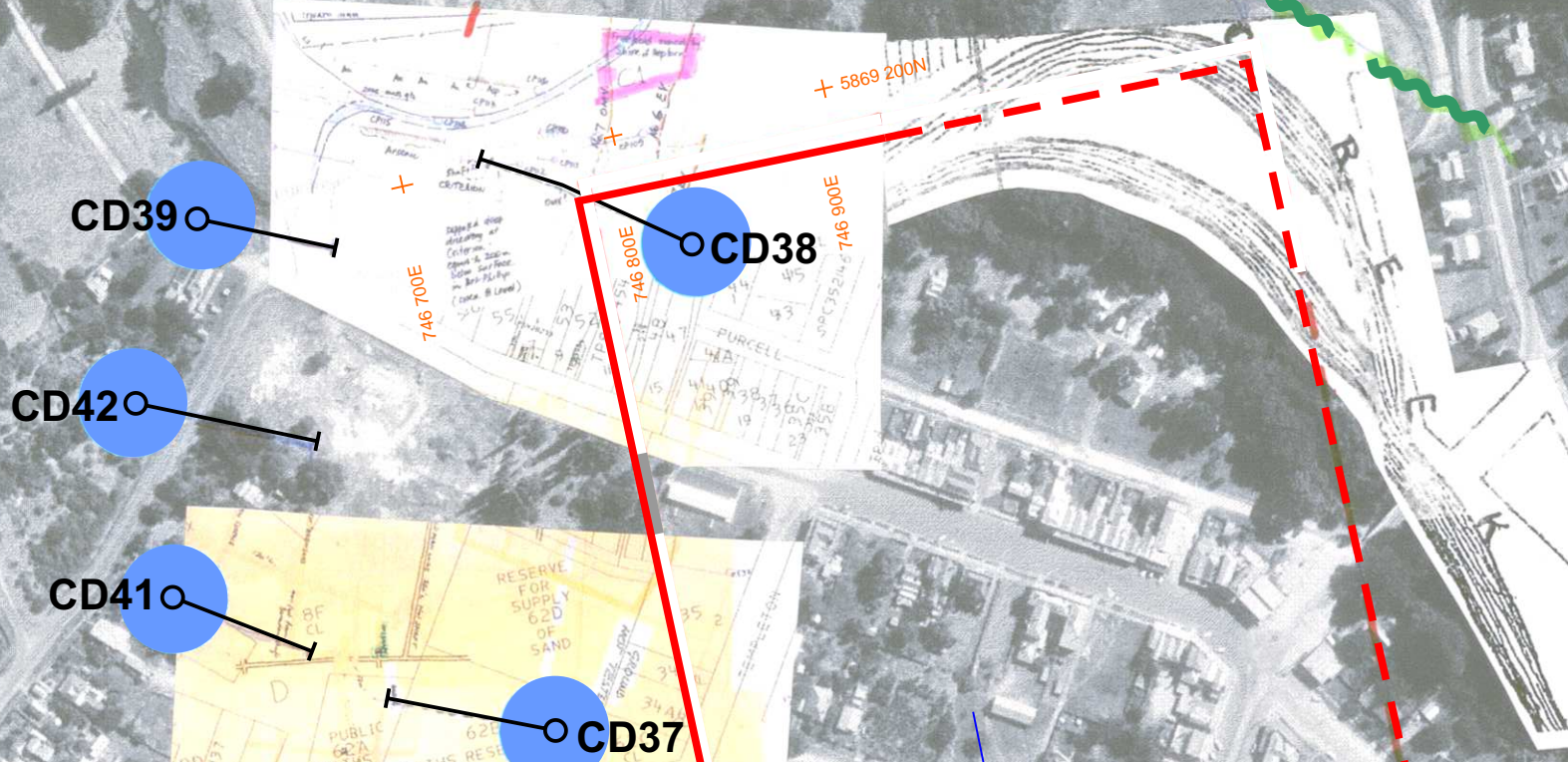
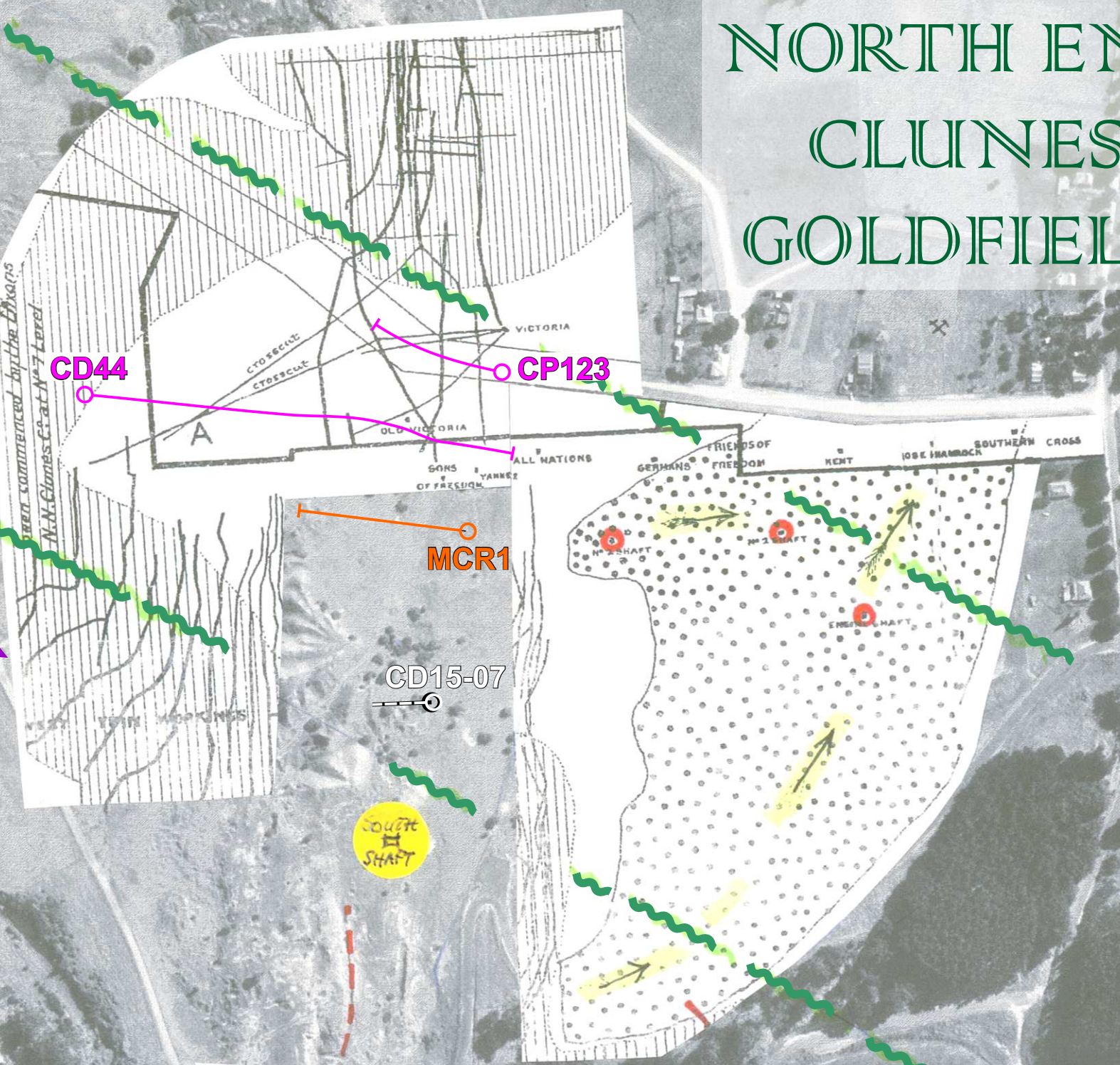
The poster is provided as an introductory step towards conversation with the residents of Clunes, in due course. The poster and this text should leave no doubt about which parts of Clunes are most likely to reward efforts to outline more of the quality gold resources for which Clunes became famous.

A second poster will be provided shortly, to illustrate other aspects of Clunes gold developments.

F.L.Hunt,  
On behalf of Directors, Mount Rommel Mining Ltd.



# NORTH END CLUNES GOLDFIELD



25 Bored August 1888  
bedrock at 55m

22 Drilled July/August 1888  
39.4m vb

23 qv @ 193' coarse gravel  
bedrock at 59m

lead trending  
southerly

27 Bedrock  
48.7m

For cross-section at  
New Lothair shaft  
as at September 1877  
see GSV Rep. Prog.  
Nov (1878)

Series 1 to 10  
May to November 1891

Vertical P4 & P5  
WP 17/05/2004

40.8vb 47.3vb 44.37vb 47.8vb 49.6vb

8 43.6vb 42.3vb

10 36.4vb

5L 4L

23/12/1872  
157' in vb  
(47.8m)

Under EL 34 (WMC)  
CD2 12 September 1959  
327 drill shifts to 2 May 1960  
Hole extent 2381' 8"

25.9 mvb CD1  
28.9 mvb CD2

CD1 20/03/1959  
240 drill shifts to 26/10/1959 Vertical - TD 1803'

FLH021602

AMG 5868 600N

AMG 5868 200N

AMG 746 800E

AMG 746 400E

AMG 746 800E

AMG 746 400E

AMG 746 800E

AMG 746 400E

AMG 746 800E

AMG 746 400E

AMG 746 800E

AMG 746 400E

AMG 746 800E

AMG 746 400E

AMG 746 800E

AMG 746 400E

AMG 746 800E

AMG 746 400E

AMG 746 800E

References-  
(1) Dept. of Mines Victoria  
Boring Records III (1887)  
(2) Allan R  
Reports & statistics MD Vic  
30 Sept 1891 page 19 (2 plates)

Gold rich alluvial wash to west in  
New Lothair, falls away to east, as the  
wash poorer in gold in Bute & Downes mine  
(recorded yield 14,378 oz)

Bore No.6  
(Commenced 20th February finished 20th March 1886)

Strata pierced	Thickness
Surface clay	5 0
Blue and brown rock	42 3
Red clay	4 0
Brown rock	22 10
Blue rock	119 1
Stiff bluish clay	39 6
Sandy clay with quartz stones	41 2
Coarse gravel and white clay	44 3
Different clays	17 7
Wash	1 0
Bed-rock	17 6
	6 10
Total depth of No.6 bore	350 0

231' 1  
52.6 mvb

235' 2  
54.6 mvb

274' 3  
56.2 mvb

250' 4  
56.4 mvb

290' 5  
56.4 mvb

343' 6  
58.8 mvb

10 306'  
62.7 mvb

8 303'  
57 mvb

9 282'  
55.6 mvb

Noted-  
13m rough gravel  
wash at bottom  
(no gold reported)