



P.O. Box 80, Bundoora, Vic. 3083

Email: info@mountrommel.com

Web : www.mountrommel.com

5 September 2017

**MOUNT ROMMEL MINING LTD
CLUNES GOLDFIELD - COMMERCIAL PREREQUISITE - CROWN LANDS**

Mount Rommel Mining Ltd. owns 100% all shares in Bonshaw Gold Pty. Ltd., applicant for Exploration Licence Nos. 006406 and 006473 at Clunes.

Much of the ground covered by those applications is Crown land.

On and from 25 October 2013, commercial activity on Crown land at Clunes became subject to the prior completion of an Activity Agreement with the Dja Dja Wurrung Aboriginal Lands Corporation.

Future exploration drilling and portions of the paths for underground access involve Crown lands variously located within the Clunes Goldfield. Hence there is a pre-requisite to sensible operations - the Company must hold an appropriate Land Use Activity Agreement (LUAA).

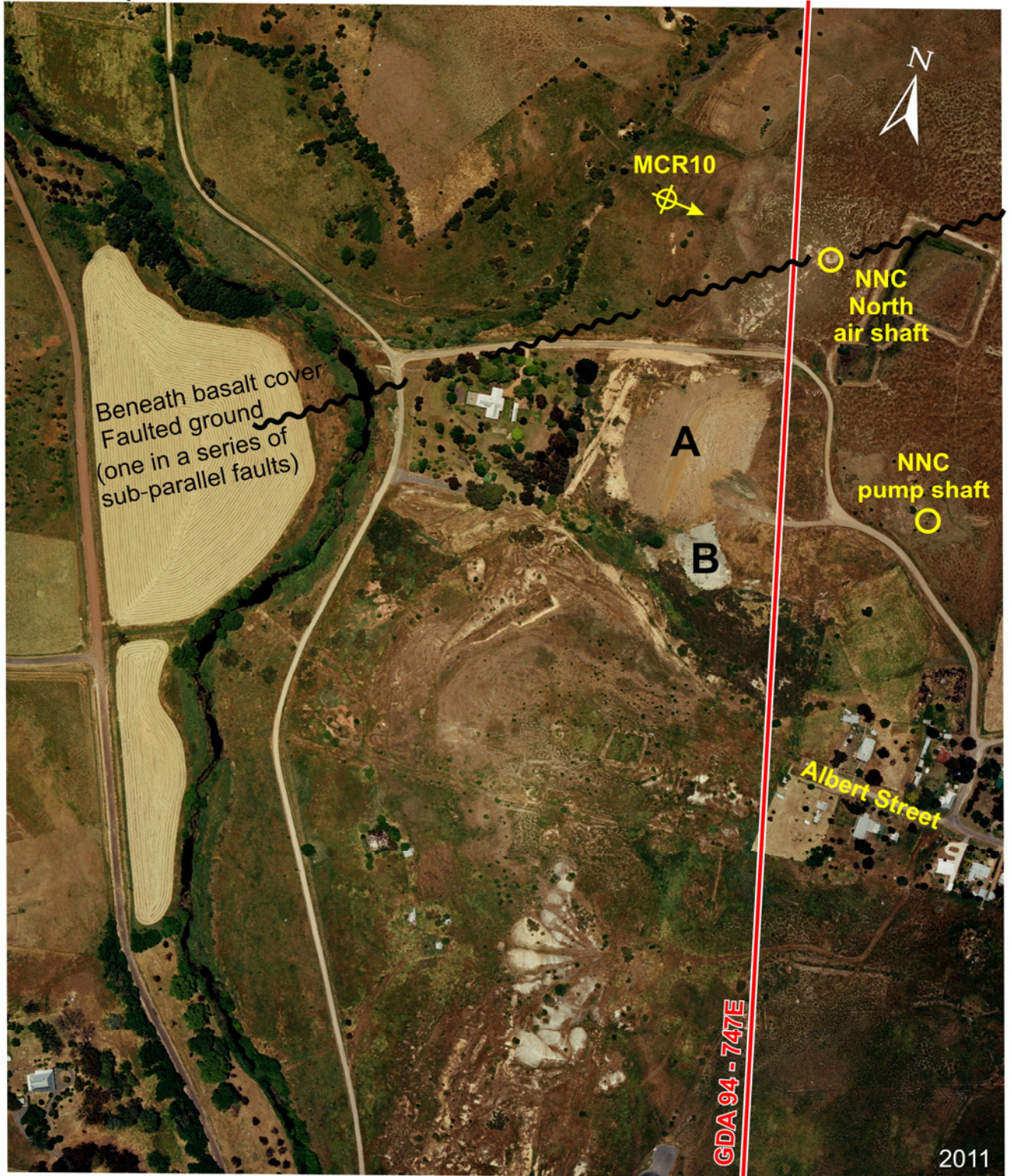
For continuous disclosure purposes - Bonshaw Gold Pty. Ltd. now holds two (2) recognised LUAA -

- one with respect to areas within ELA 006406, effective 23 May, 2017, and
- one with respect to areas within ELA 006473, effective 29 August, 2017.

It is anticipated licence grant will follow, as the LUAA's are not transferable.

F.L.Hunt
Director

Photo Map - Not to Scale



**EL 5492
Mount Rommel Mining Ltd**

- A** Comprehensive soil cover over former site of Clunes rubbish tip
- B** Rehabilitated waste rock pile former New North Clunes gold mine

ELApp 006473

Land use (Crown lands)
Activity Agreement with traditional owners
Dja Dja Wurrung Clans consent given/accepted notified 29 August 2017.
BONSHAW GOLD PTY LTD