



28 Lawson Crescent, Thomastown, Vic.3074

P.O. Box 80, Bundoora, Vic. 3083

Email: info@mountrommel.com

Web : www.mountrommel.com

17 November 2015

INFORMATION FOR MEMBERS AND THE PUBLIC GENERALLY

THE 2015 DRILLING CAMPAIGN - CLUNES GOLDFIELD.

Here are several photos of the working area at Clunes.

The drill rig is "centre stage". Why, one might ask, should anyone imagine the miners of 1893 would leave behind any gold in the middle of this once-famous paddock ??

Mount Rommel Mining Ltd. has the benefit of much hindsight, freely given in so very many public reports in times past, beginning about 1858. Add to that its own information, collected through drilling campaigns in years 2004, 2006 & 2007, 2008, and again earlier in 2015.

The old records reveal an emphasis on the pursuit of known (and named) veins.

This Company has approached the task of re-discovery rather differently.

Earlier in 2015, at Site D -- marked on photo - four diamond drill holes at the south end of MIN 5391 demonstrated the old miners did overlook a gold-bearing structure of substantial dimensions. The full extent of those dimensions remains unknown. This structure shows quartz breccia, with gold, similar to that first seen in hole CD06-05, the similarity indicating a structure cutting right across a 50 metre wide central part of the field.

The drill rig is currently in the mid-section of the old paddock, the foundation for the gold resources won by the once-famed Port Phillip mine. The residual dumps are part of the heritage of this site. Those same rock piles provide both heritage landscape, and a means to appreciate the scale of those older workings.

In this mid-section, between the old Port Phillip North and South shafts, several pieces of evidence were worth following –

- (1) The series of Mount Isa Mines percussion holes (January 1996) provided the former Golden Heritage Company with sample material, enabling a different line of investigation in year 2000.

The resultant data directed attention to a prospective opportunity remaining within the most central portion of a famed old gold-field. This opportunity has since been shown to be valid.

- (2) Part of the follow-up to the above - holes CD07-03, '04, and '05 - produced more good evidence of intact veining, and indications of the likely presence of a breccia zone (with gold) at a depth which turns out to be similar to the depth of breccia material found in hole CD06-05, and more recently in 2015.

For past reference, with photos of drill core - review NSX release dated 21 June 2007.

- (3) there is assay evidence, plus geological observation, from diamond and percussion drilling in 2004, which continues useful today.

The facts are these –

- The first Work Plan approval for a hole about the position of the drill rig in these current photos is dated years ago, at 6 September, 2005.
- A specific variation is dated 19 June 2007.
- The Ministerial decision to grant to others MIN 5414 wholly surrounding MIN 5391, effective 20 July 2009, constrained all site work until 2015.
- The Work Plan under which current activity proceeds is a document registered 10 August, 2010.

Very recently, we uncovered the collar of Mount Isa Mines hole MCR 11. Buried since January 1996, this exact location shows how luck played its part here.

The position of successful hole CD07-04 was based on a presumed location of MCR 11 - now known to be 5 or 6 metres in error, as shown on one of the Work Plan approval diagrams.

The excellent CD07-04 assay results for gold have led to the drilling rig being placed where it is today, as in these photos.

Every piece of evidence from drilling to date shows the gold remaining in this hill to occur within the boundaries of MIN 5391.

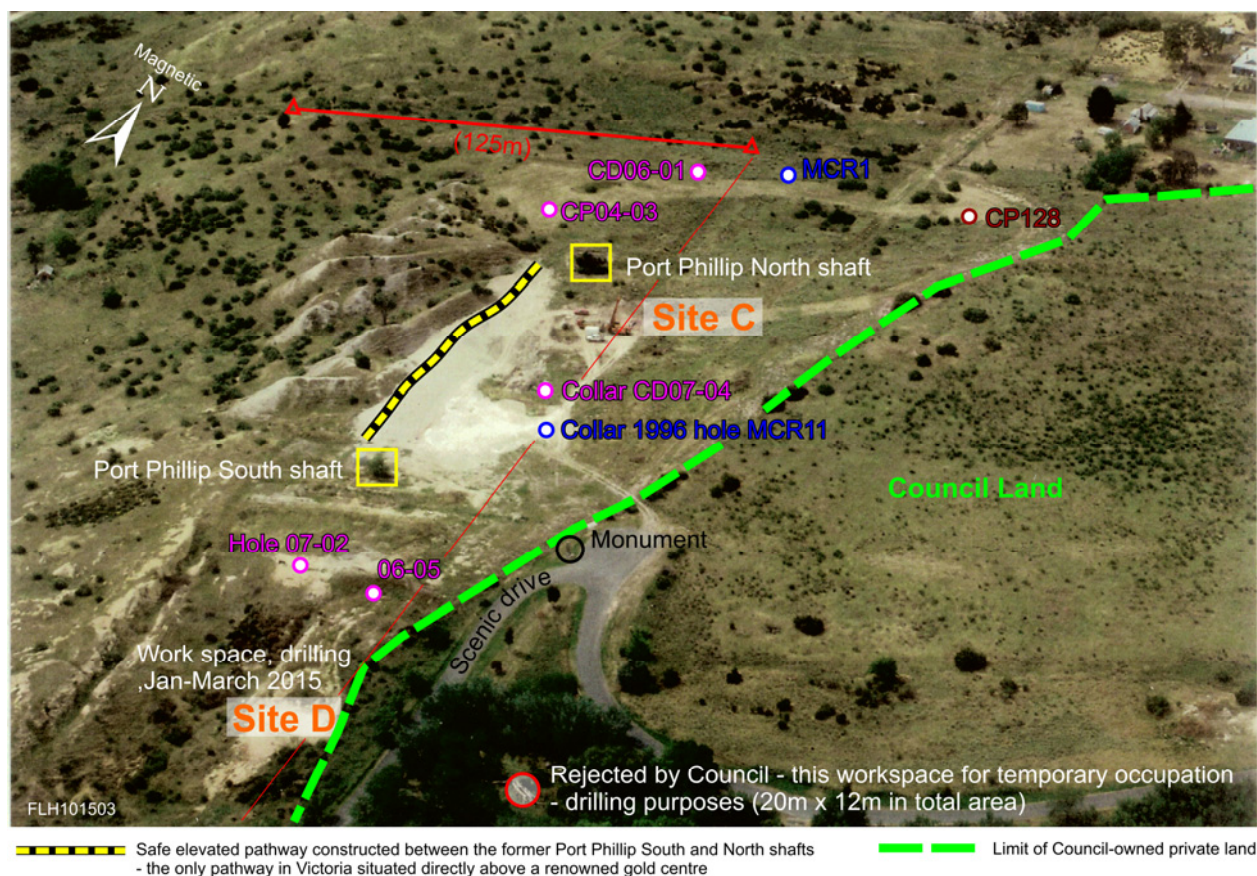
The drilling rig at "centre stage" in these photos is sited near to the east boundary of MIN 5391 - the marked line.

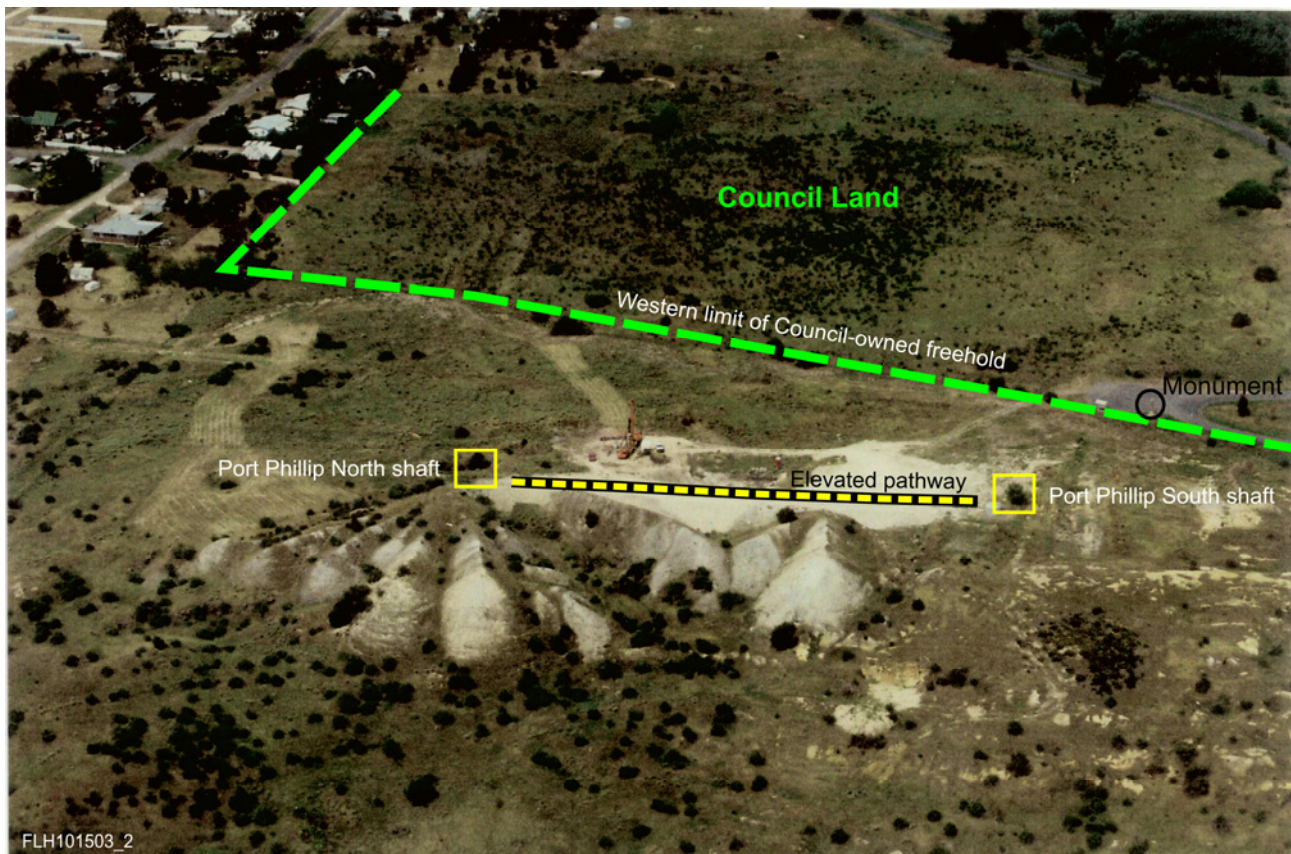
The prospective possibilities identified beyond MIN 5391 fall within EL 5492, held by Mount Rommel Mining Ltd.

Clunes has a quite wonderful gold-mining heritage. The evidence is that drilling can reveal mineralized quartz structures, in positions the old miners thought not prospective.

Drilling is planned to continue, to investigate gaps in knowledge of this famous historic gold field. Results continue to be encouraging.

F.L.Hunt,
On behalf of Directors, Mount Rommel Mining Ltd.





"Port Phillip " site : 2pm, 8 November 2015

Photo looking East - drilling rig at centre, on Site C

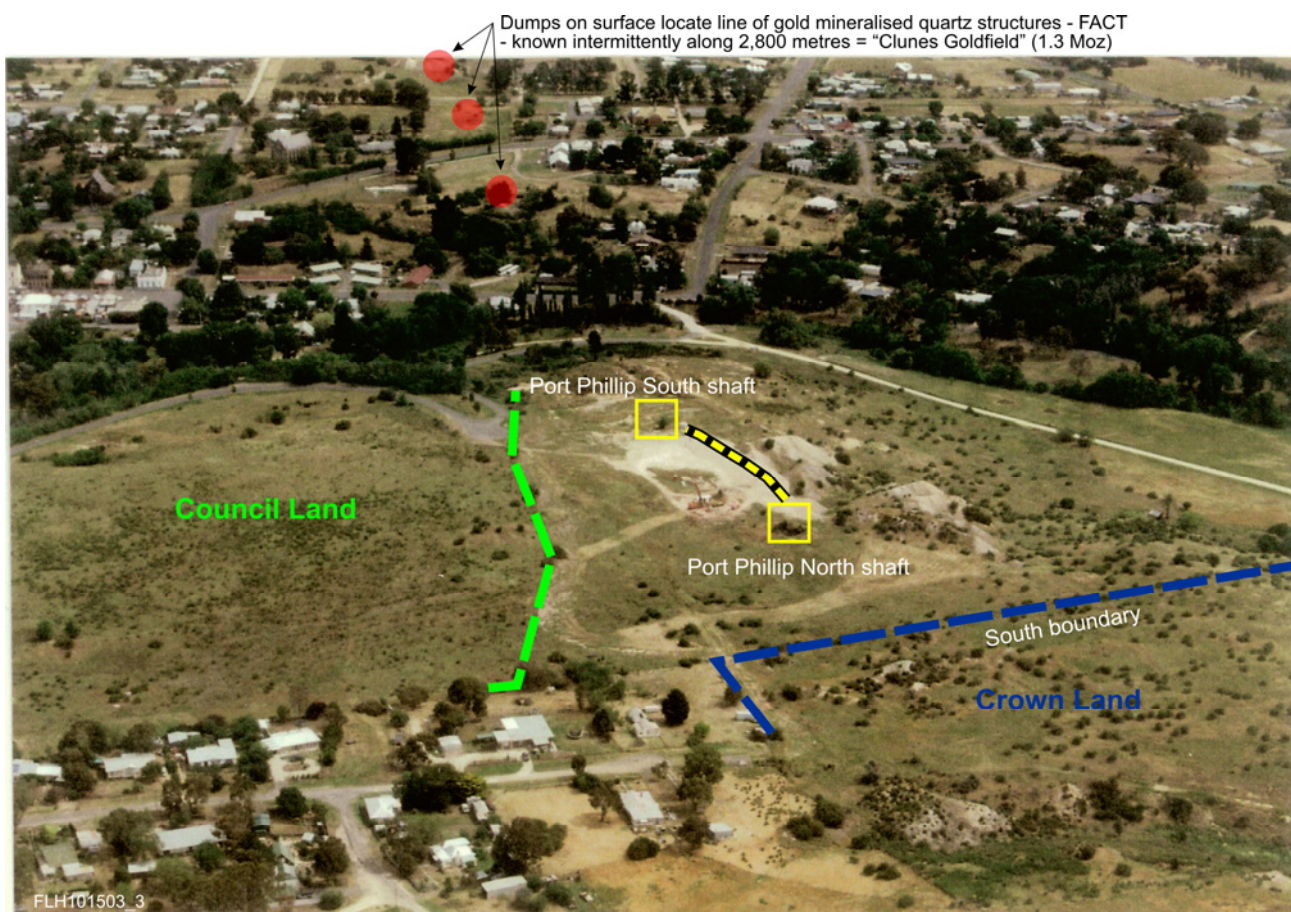


Photo looking South - Bare ground is Council Freehold (left of photo)