

Over **\$1.9 Million** Reasons to bank with **CASH**

Canterbury, Ashburton, Surrey Hills & Balwyn
Community Bank® branches

Canterbury,
Ashburton
Surrey Hills
& Balwyn
**Community
Bank®** branches



Newsletter « Spring 2012

COMMUNITY BANKING IS BRANCHING OUT

Community **What a difference a Bank® Makes!**

4 years ago, the Ashburton branch of Bendigo **Community Bank®** came to town...and life in Ashburton and surrounding suburbs took off!

Ashburton Community Groups have embraced their bank... and what a difference it has made!

Over \$500,000 has gone back into the local community – and it is your money staying in your community!



DO YOU REALLY KNOW BOROONDARA?

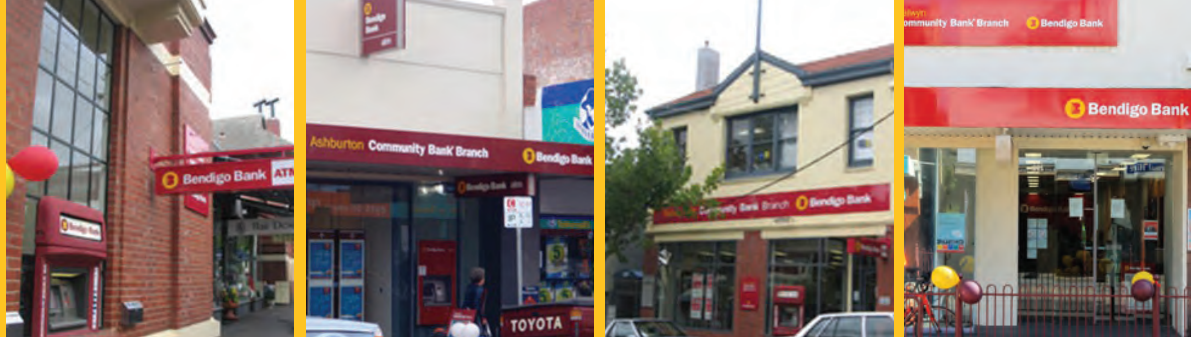
Dash around your City & gain a truly amazing insight!

15 – 25 Year Olds can
Do a 'City Dash' on Sat.
20 October, 10am-3pm.

Great prizes, lots of fun
& amazing discoveries

Facebook-
[www.facebook.com/
youthfoundationsYAAC](http://www.facebook.com/youthfoundationsYAAC)





ALL GOOD SPORTS IN SURREY HILLS

Surrey Hills Community Bank® Manager Aaron Knott is amazed at the community support for this suburb's sporting teams. At the **Surrey Park Under 14s footy** grand final, over 300 supporters comprising parents, players, friends from other age groups, Senior Club representatives, teachers and even girls from the Surrey Park Netball teams turned up to cheer the team on. Team kids come from 34 different schools including Roberts McCubbin, Our Lady's, Wattle Park and Surrey Hills primary schools.

Aaron braved rain and miserable conditions to present a \$3,000 cheque to the **Surrey Hills Lacrosse team** which then recorded a 7 nil win against rivals Malvern.



CANTERBURY COMMUNITY CARES

Canterbury Community Bank® branch is proudly supporting the Camberwell Nazareth Care Fete on Saturday November 10, 9am-12pm at 16 Cornell Street Camberwell.

Free jumping castle and animal farm activities for kids are sure to draw a large crowd. All Fete proceeds will help provide quality aged care in not only Camberwell but also Ballarat, Geraldton, Tamworth, Wynnun and Christchurch.



Canterbury, Surrey Hills & Balwyn Community Bank® branches each have their own facebook page! Like our facebook pages and share with your friends.

SCOUTING AROUND ASHBURTON

Ashwood based Second Seventh West Waverley Scout Group has been encouraging families to bank with Ashburton Community Bank® as an easy way to raise funds to attend the Queensland Jamboree. In response to the group's banking activities, CASH Director Gordon McFarlane presented a \$2,000 cheque to the group which not only helps the group, but will assist with camping equipment and sponsorship to bring scouts from Tonga to the Jamboree.

BALWYN TIGERS BEST IN THEIR LEAGUE

Balwyn Community Bank® branch announced a \$10,000 sponsorship to assist Balwyn Tigers Footy Club continue to develop local football. The Tigers have just won the 2012 Eastern Football League Premiership.

Community Banking

Putting Heart into Local Communities

Canterbury,
Ashburton
Surrey Hills
& Balwyn
**Community
Bank®** branches



COMMUNITY COLLABORATIONS

Swinburne Hawthorn Campus ATM

1200 Swinburne students now have easy access to their money through a new Bendigo Bank ATM recently installed at Swinburne Library.



Balwyn Primary

Learning to read is fun for Balwyn Primary School students, who have also been using the Balwyn Community Bank® branch for school banking as they learn to save for their futures.



Camberwell Showtime

CASHB Community Bank® branches support Boroondara's talented Scouts and Guides to stage a sensational performance.



Magic/Dragons Challenge Continues!

We told you Basketball is BIG in Boroondara and you can see that Camberwell Dragons has teams for all ages. The CASHB Community Bank® also support the Dragon's main rivals, Hawthorn Magic.



Recent Sponsorships

Ashburton Area Youth Foundation
Ashburton United Junior Football Club
Balwyn Football Club
Balwyn Junior Football Club
Boroondara Eagles Football Club
Boroondara Netball Association
Box Hill/Canterbury Chess Club
Burwood Tennis Club
Camberwell Central Bowls Club
Camberwell Lacrosse
Florence Road Pre School
Glen Iris Junior Football Club
Greythorn Falcons Junior Football Club
Mont Albert Primary School

Nazareth Care
Old Camberwell Grammarians Football Club
Old Carey Grammarians Association
Old Carey Grammarians Football Club
Old Trinity Grammarians Amateur Football Club
Parkhill Primary School
Power Neighbourhood House
Rotary Club of Glenferrie
Rotary District 9810
St Paul's Kindergarten
St Michael's Primary School
St Augustine's Anglican Kindergarten
Second Seventh Waverley Scout Group
Scouts Australia – Camberwell Showtime

Hawthorn Update

Banking that is good for Hawthorn

With every product or service we offer, money goes back into the community to support local clubs, organisations and initiatives. Hawthorn Bowls Club received \$3000 allowing the club to purchase new sporting equipment.



Over **\$1.9 Million Reasons** to bank with **CASH**

Newsletter « Spring 2012

Over **\$1.9 Million Reasons**
to bank with **CASH**

Canterbury, Ashburton, Surrey Hills & Balwyn
Community Bank® branches

Canterbury,
Ashburton
Surrey Hills
& Balwyn
**Community
Bank®** branches



Your Home

*Choose a home loan
that's right for you*



Drop into your nearest **Community Bank®** branch:
Canterbury, 143 Maling Road – 9836 9466
Ashburton, 241 High St – 9885 2666
Surrey Hills, 107 Union Road – 9890 7188 or
Balwyn, 411 Whitehorse Road – 9836 8029

Terms, conditions, fees and charges apply. All loans subject to the bank's normal lending criteria. Bendigo and Adelaide Bank Limited ABN 11 068 049 178. AFSL/Australian Credit Licence 237879 HL28 (160802_v1) (5/08/2012)