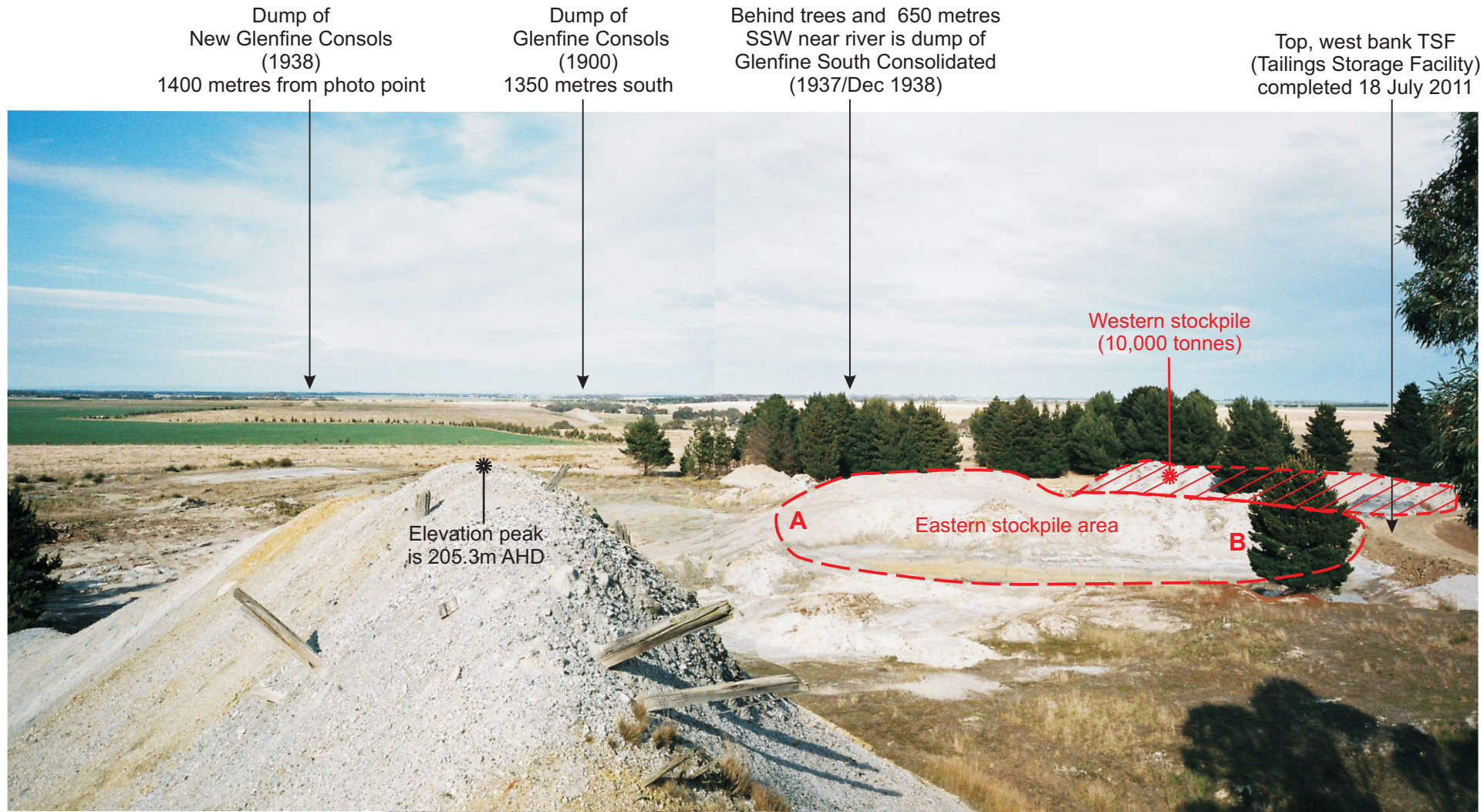


## NSX GENERAL ANNOUNCEMENT - PROGRESS AT GLENFINE MIN 5492

### GLENFINE, MIN 5492 (August, 2011)

The peak of the old waste mullock stockpile shown left of photo centre (below) is outside the bounds of the NE corner peg, MIN 5492. All the stockpiled sands (to the right) are within the area, MIN 5492, the west limit of licence being just beyond the pine trees. The photo looks generally south & south west



This photo was taken 1 August 2011 from the top of the old waste mullock heap situated south of the old (1898/1899) No 1 shaft, Glenfine South mine.

- In this photo, the eastern stockpile area is outlined. The distance from points A to B marked on the photo, is about 60 metres. The height of stockpiled material varies, sometimes more than 5 metres.
- This eastern stockpiled area is approx 50m by 60m comprising some 27,000 tonnes awaiting treatment.
- A third stockpile of low grade material is hidden from view this photo.
- Other sands, known from recent analyses to be gold-bearing exist under the white patch at centre of this photo, to depths 3 metres.

Sufficient sands exist on site for processing for an anticipated 2 year period. For sands volume confirmation purposes these stockpiles were surveyed 11 August 2011