

Ricegrowers Limited ACN 007 481 156 (the “Company”) applies for listing on the National Stock Exchange of Australia (“NSX”). The following information is provided in support of that application pursuant to Listing Rule 4.4.

## **1. GENERAL**

- 1.1 The Company was registered as a co-operative on 24 July 1950 under its original name Ricegrowers’ Co-operative Mills Limited, with the primary objective of receiving, processing and marketing rice supplied by its members. The co-operative’s name was changed to Ricegrowers’ Co-operative Limited on 13 December 1985 and on 14 December 2005 it was converted into a company under the Corporations Act under its current name Ricegrowers Limited.
- 1.2 The address of the Company’s registered office is NIP 37 Yanco Avenue Leeton NSW 2705.
- 1.3 The share register is held at the registered office of the Company and is maintained by Link Market Services Limited of level 12, 680 George Street, Sydney, NSW 2000
- 1.4 Ricegrowers seeks the quotation of all of the fully paid B Class Shares. There are 27,679,460 B Class Shares on issue, of which 27,348,495 are fully paid up. The balance of 330,965 B Class Shares will not be fully paid up until July 2007 and quotation of these shares will be sought at that time. The rights of the B Class Shares are set out in item 3 below.
- 1.5 All of the above B Class Shares are currently on issue. There is no capital raising associated with the listing.
- 1.6 The estimated market capitalisation of the B Class Shares is \$59,234,044. As there has been no previous trading in these shares, this figure has been calculated by multiplying the total number of B Class Shares (27,679,460) by \$2.14, being the price at which B Class Shares were most recently issued.
- 1.7 The Company’s securities are not listed or traded on any other stock exchange.

## **2. Share capital and ownership**

- 2.1 The Company has 1,127 A Class Shares and 27,679,460 B Class Shares on issue at the date of this application.
- 2.2 Annexure A sets out the directors’ interests in shares of the Company including the dates that the shares were allotted to the director, the consideration provided for the shares and the total number of A Class Shares and B Class Shares held by each director.
- 2.3 Annexure B sets out the names of all the shareholders of the Company including the dates that the shares were allotted to the shareholder, the consideration provided for the shares and the total number of A Class Shares and B Class Shares held.
- 2.4 There are no shareholders who own 5% or more of the B Class Shares.

## **3. Securities**

- 3.1 Voting control of the Company is conferred upon A Class Shareholders. A Class Shares are voting Shares that can only be held by Active Growers or persons whom the Directors believe, on reasonable grounds, will become Active Growers.

A Class Shares are redeemable preference Shares and may be redeemed (by repayment of the issue price, if any) if a holder has not delivered at least one tonne of paddy rice to the Company for at least 2 years. A Class Shares do not confer any rights to capital distributions or dividends.

- 3.2 The B Class Shares represent the economic ownership of the Company having rights to capital distributions and dividends. B Class Shares do not carry any voting rights (except in very limited circumstances associated with changing the rights attached to B Class Shares) and are not redeemable.

B Class Shares can only be issued to:

- (a) A Class Shareholders or persons to whom the Directors have agreed to issue an A Class Share;
- (b) Persons who, at the time of the issue, are existing B Class Shareholders; and
- (c) Approved Entities (trustees of Shareholder superannuation funds approved by the Board).

A person cannot hold a number of B Class Shares that exceeds 1% of the total number of issued B Class Shares. A person cannot hold a number of B Class Shares that, when aggregated with any B Class Shares held by all Associates of that person, exceeds 2% of the total number of issued B Class Shares.

#### **4. History and nature of business**

- 4.1 The Company was registered as a co-operative on 24 July 1950 under its original name Ricegrowers' Co-operative Mills Limited, with the primary objective of receiving, processing and marketing rice supplied by its members. Its name was changed to Ricegrowers' Co-operative Limited on 13 December 1985. Following approval by its members on 4 October 2005, Ricegrowers' Co-operative Limited registered as a company under the Corporations Act on 14 December 2005 and changed its name to Ricegrowers Limited.
- 4.2 The core business of the Company and its child entities ("the SunRice Group") involves the sourcing and processing of rice and the manufacture of rice food products under the SunRice and other brands. It has developed into a vertically integrated agribusiness with an extensive range of table rice and value added products that are supplied both within Australia and to more than 60 countries worldwide. Other significant businesses carried on by the SunRice Group include the production and sale of stockfeed products utilizing rice and other grains (CopRice division), the importation and distribution of specialty food products (Riviana) and rice trading.
- 4.3 Refer to item 8 below which sets out further details of the operations of the child entities of the Company.
- 4.4 The annual turnover of the SunRice Group for the financial years ended 30 April 2004, 2005 and 2006 and for the six month period ended 31 October 2006 is set out in Annexure C.
- 4.5 The recent business strategy of the Company has been anchored on two key pillars:
- Operating excellence; and
  - Innovation.

In recent years the Company has undertaken intensive capital investment programs focused on milling and packing capacity upgrades and automation. Substantial operational cost reductions through efficiency and productivity gains have been achieved. It has also continued to build on a heritage of product innovation and market expansion and maintained a stance of delivering highly differentiated product offerings across its markets.

4.6 The Board's vision is for the Company to become the 'world's favourite rice food company'. This will require the Company to be:

- Internationally focused;
- A favoured employer, producing popular products and brands; and
- A supplier of rice foods for all eating occasions including breakfast, lunch, dinner and snacking opportunities.

The Board and management have developed a strategic framework for defending and growing the business profitably across existing and new markets and products, ensuring valuable differentiation from competitors.

The strategic imperatives that will ensure the future strength of the business include:

- Ensuring Australian operations remain highly efficient and profitable;
- Building and growing presence in branded rice foods in domestic and international consumer markets;
- Building alliances with partners in retail, food service and food ingredient market channels;
- Expanding the range of value-added rice foods; and
- Enhancing the Company's position as a strategic international trader of rice to complement domestic rice production.

4.7 The SunRice Group owns processing and storage facilities in the Riverina district of New South Wales, which are structured to deal with an annual rice crop of approximately 1.2 million tonnes of paddy rice supplied by Australian rice growers using efficient and sustainable farming systems. Local rice production is dependant on the availability of water for irrigation and, in recent years, the size of the Australian rice crop has been adversely affected by drought conditions. The Company seeks to mitigate the risk of short crops by carrying over rice from the preceding crop year, where this is possible, and through its rice trading operations which enable it to access rice from international suppliers.

## 5. Summary of earnings

Annexure C shows the consolidated income statement (and earnings per share) for the Company for the financial years ended 30 April 2004, 2005 and 2006 and for the six month period ended 31 October 2006.

## 6. Tabulation of balance sheet

Annexure D shows a comparison of the consolidated balance sheet and other key financial statistics for the Company as at 30 April 2004, 2005 and 2006 and 31 October 2006.

## 7. Employees

Set out in the table below are details of the employees of the SunRice Group:

Company	Core employees	Casual/seasonal employees	Max employees employed for preceding 12 month period	Min employees employed for preceding 12 month period

Company	Core employees	Casual/seasonal employees	Max employees employed for preceding 12 month period	Min employees employed for preceding 12 month period
Ricegrowers Limited	740	150-200	Core 862 Casuals 150	Core 650 Casuals 100
Trukai Industries Limited	500	60-100	Core 500 Casuals 80	Core 400 Casuals 60
Solomons Rice Company Limited	20	N/A	20	20
Aqaba Processing Company Ltd	42	20	Core 45 Casuals 20	Core 35 Casuals 15
Riviana Foods Pty Ltd	127	42	Core 130 Casuals 50	Core 100 Casuals 30

## 8. Child entities

Annexure E sets out the corporate structure of the Company and its child entities (separated into overseas and domestic entities). A description of the operations of the child entities of the Company is set out below.

### (a) Australian Rice Growers Cooperative Limited ACN 067 290 224

Business Activities: This cooperative is dormant.

Share capital details:

Shareholders	Class of Shares	No of shares held	Total amount paid
Ricegrowers Limited	Ordinary	1	\$1.00

### (b) Hulltech Pty Limited ACN 101 254 399

Business Activities: This company is dormant.

Share capital details:

Shareholders	Class of Shares	No of shares held	Total amount paid
Ricegrowers Limited	A	1	\$1.00

### (c) SunRice Trading Pty Ltd ACN 000 382 150

Business Activities: Acquires and sells non-Australian sourced rice.

Share capital details:

Shareholders	Class of Shares	No of shares held	Total amount paid
Ricegrowers Limited	Ordinary	5,000	\$10,000

(d) **Ricegrowers Superannuation Plan Pty Limited ACN 065 335 275**

Business Activities: Acts solely as a Trustee of a regulated superannuation fund.

Share capital details:

Shareholders	Class of Shares	No of shares held	Total amount paid
Ricegrowers Limited	Ordinary	2	\$4.00

(e) **Rice Research Australia Pty Ltd ACN 003 678 644**

Business Activities: Farming enterprise with the principle objective of collaborating with NSW Agriculture to develop experimental rice varieties as part of NSW Agriculture's rice breeding program.

Share capital details:

Shareholders	Class of Shares	No of shares held	Total amount paid
Ricegrowers Limited	Ordinary	2	\$4.00

(f) **Australian Grain Storage Pty Ltd ACN 000 333 648**

Business Activities: Owns rice storage facilities.

Share capital details:

Shareholders	Class of Shares	No of shares held	Total amount paid
Ricegrowers Limited	Ordinary	4	\$8.00

(g) **Riviana Foods Pty Ltd ACN 061 388 092**

Business Activities: Imports, manufactures and distributes market grocery and food items.

Share capital details:

Shareholders	Class of Shares	No of shares held	Total amount paid
Silica Resources Pty Ltd	Ordinary	2	\$4.00

Silica Resources Pty Ltd holds the shares in Riviana Foods Pty Limited for Ricegrowers Limited.

(h) **Silica Resources Pty Ltd ACN 003 434 893**

Business Activities: Acts as an intermediate investment company between the Company and Riviana Foods Pty Ltd.

Share capital details:

Shareholders	Class of Shares	No of shares held	Total amount paid
Ricegrowers Limited	Ordinary	2	\$2.00

(i) **SunRice Australia Pty Limited ACN 101 263 629**

Business Activities: This company is dormant.

Share capital details:

Shareholders	Class of Shares	No of shares held	Total amount paid
Ricegrowers Limited	A class ordinary shares	1	\$1.00

(j) **Stockfeed Manufacture & Distribution Pty Ltd ACN 006 379 246**

Business Activities: This company is dormant.

Share capital details:

Shareholders	Class of Shares	No of shares held	Total amount paid
Ricegrowers Limited	Ordinary	2	\$4.00

(l) **Trukai Industries Limited** (Incorporated in Papua New Guinea)

Business Activities: To process, pack, distribute and market rice products in Papua New Guinea.

Share capital details:

Shareholders	Class of Shares	No of shares held	Total amount paid (PNG Kena)
Ricegrowers Limited (66.32% shareholding)	Ordinary A Class	1,059,680	1,059,680
Melanesian Trustees Limited (33.77%)	Ordinary A Class	540,320	540,320

shareholding)			
---------------	--	--	--

(m) **Rice Industries Ltd** (Incorporated in Papua New Guinea)

Business Activities: This company is dormant.

Share capital details:

Shareholders	Class of Shares	No of shares held	Total amount paid (PNG Kena)
Trukai Industries Limited (100% shareholding)	Ordinary	2	2.00

(n) **Trukai (Wholesale) Limited** (Incorporated in Papua New Guinea)

Business Activities: Wholesaler of rice products to distributors.

Share capital details:

Shareholders	Class of Shares	No of shares held	Total amount paid (PNG Kena)
Trukai Industries Limited (100% shareholding)	Ordinary	2	2.00

(o) **Solomons Rice Company Limited** (Incorporated in Solomon Islands)

Business Activities: Distributes rice products in the Solomon Islands.

Share capital details:

Shareholders	Class of Shares	No of shares held	Total amount paid (SBD)
Ricegrowers Limited (100% shareholding)	Ordinary A Class	3,926,288	3,926,288

(p) **Sunarise Insurance Company Limited** (Incorporated in Bermuda)

Business Activities: Incorporated to minimise and stabilise premium costs from conventional underwriting methodology and maximise policy conditions/coverage through specific design utilising the capacity of self insurance and “captive” formation to directly access international reinsurers and associated international best practice resources.

Share capital details:

Shareholders	Class of Shares	No of shares held	Total amount paid
Ricegrowers Limited (100% shareholding)	Ordinary	200,000	\$200,000

(q) **Sunshine Rice Inc** (Incorporated in the United States)

Business Activities: Distribution and marketing of USA rice.

Share capital details:

Shareholders	Class of Shares	No of shares held	Total amount paid (USD)
Ricegrowers Limited (100% shareholding)	Ordinary	1,000	\$1,000

(r) **Aqaba Processing Company Ltd** (Incorporated in Jordan)

Business Activities: Incorporated to receive, store, process and pack bulk shipments of Australian and US Rice for distribution in the Middle East.

Share capital details:

Shareholders	Class of Shares	No of shares held	Total amount paid in Jordanian Dinar
Ricegrowers Limited (80% shareholding)	Ordinary	24,000	24,000
Yousef Nader & Sons Co (20% shareholding)	Ordinary	6,000	6,000

(s) **Sunbridge Australia Pty Ltd ACN 068 352 803**

Business Activities: This company is dormant.

Share capital details:

Shareholders	Class of Shares	No of shares held	Total amount paid
Ricegrowers Limited	Ordinary	5,000	\$5,000
Mitsubishi Inc	Ordinary	5,000	\$5,000



**(t) Seaside Pty Limited ACN 054 754 148**

Business Activities: Distribution of rice.

Share capital details:

Shareholders	Class of Shares	No of shares held	Total amount paid
Ricegrowers Limited	Ordinary	2	\$2.00

**(u) Herto N.V. (Incorporated in Belgium)**

Business Activities: Incorporated to develop rice related product sales – has since branched out into research and development with a higher production capacity.

Share capital details:

Ricegrowers Limited holds a minority interest in Herto N.V.

Shareholders	Class of Shares	No of shares held	Total amount paid Euro
Ricegrowers Limited (33.33% shareholding)	Ordinary	800	249,166
Herba Foods S.L.U. (33.33% shareholding)	Ordinary	800	249,166
N & C Boost N.V. (33.33% shareholding)	Ordinary	800	249,166

**9. Dividend record**

Details of dividends paid by the Company, Riviana Foods Pty Ltd and Trukai Industries Limited (being the only dividend paying companies in the SunRice Group) are set out below:

**Ricegrowers Limited**

Prior to conversion to a company, Ricegrowers Limited operating as a co-operative distributed an annual dividend of 32 cents per share to the shareholders. The dividends paid for the preceding three financial years are set out in the table below.

<b>Financial Year End</b>	<b>Dividend Paid \$000</b>	<b>Dividend per Share</b>	<b>Payment Date</b>	<b>Declaration Date</b>
April 2004	5,148	32c	6 July 2004	Full year unfranked dividend declared by the Board on 22 April 2004
April 2005	5,032	32c	5 July 2005	Full year unfranked dividend declared by the Board on 28 April 2005
April 2006	5,022	21.5c	11 July 2006	Full year unfranked dividend declared by the Board on 27 April 2006

Dividends have been paid on an annual basis.

In December 2005, as part of the process of its conversion to a company, Ricegrowers Limited issued bonus shares to its shareholders. As a result, the amount of the dividend per share paid in April 2006 was less than the dividend paid per share in prior years.

#### **Riviana Foods Pty Ltd**

<b>Financial Year End</b>	<b>Dividend Paid \$000</b>	<b>Dividend per Share</b>	<b>Payment Date</b>	<b>Declaration Date</b>
April 2004	3,400	\$1,700,000	29 April 2004	Full year unfranked dividend declared on 22 April 2004
April 2005	12,165	\$6,082,500	29 April 2005	Full year unfranked dividend declared on 28 April 2005

Dividends have been paid on an annual basis.

Riviana Foods Pty Ltd did not pay a dividend in 2006.

#### **Management Fee**

During the year ended 2005, Riviana Foods Pty Ltd fully distributed its profits and in addition, made a distribution of \$5m from its retained earnings. During the year ended 2006, Riviana Foods Pty Ltd fully distributed its profits to Ricegrowers Limited through a management fee.

#### **Trukai (Wholesale) Limited**

<b>Financial Year End</b>	<b>Dividend Paid</b>	<b>Dividend per Share</b>	<b>Payment Date</b>	<b>Declaration Date</b>
April 2004	K1,923,981.50 (net of 17% DWT)	K2.19	3 May 2004	30 April 2003
April 2005	K1,923,981.50 (net of 17% DWT)	K2.19	8 April 2005	1 March 2005

	DWT)			
--	------	--	--	--

Trukai (Wholesale) Limited did not pay a dividend in 2006.

## 10. Properties

Annexure F sets out the property details for Ricegrowers Limited and its child entities.

## 11. Litigation

There has been no material litigation or claims made against the Company or any of its child entities in the last five (5) years. There is no current, pending or threatened material litigation against the Company or any of its child entities.

## 12. Management

### 12.1 Directors

The details of the directors of the Company are set out below.

- (a) **GERARD FRANCIS LAWSON**, LDA MAICD (Director since 1985) Chairman since 2001

- (i) Residential Address: "Warrowee"  
Deniliquin NSW 2710
- (ii) Business experience: Refer to Annexure G.
- (iii) Directorships of publicly listed or traded companies: None
- (iv) Bankruptcy or other convictions: None

- (b) **DAVID MARK ROBERTSON**, MAICD (Director since 1996)

- (i) Residential Address: "Newgrove"  
Finley NSW 2713
- (ii) Business experience: Refer to Annexure G.
- (iii) Directorships of publicly listed or traded companies: None
- (iv) Bankruptcy or other convictions: None

- (c) **BRUCE LAWSON BARBER**, FAICD Cert Ag (Director since 1984)

- (i) Residential Address: "Henledoune"  
Griffith NSW 2680
- (ii) Business experience: Refer to Annexure G.
- (iii) Directorships of publicly listed or traded companies: None
- (iv) Bankruptcy or other convictions: None

- (d) **NOEL GRAHAM**, FAICD (Director since 2001)

- (i) Residential Address: "Corunna" Deniliquin  
NSW 2710

- (ii) Business experience: Refer to Annexure G.
- (iii) Directorships of publicly listed or traded companies: None
- (iv) Bankruptcy or other convictions: None
- (e) **GARY HELOU, BE (Hons) MComm FAICD FAIM (Director since 2003)**
  - (i) Residential Address: 8 Grangewood Place  
West Pennant Hills NSW 2125
  - (ii) Business experience: Refer to Annexure G.
  - (iii) Directorships of publicly listed or traded companies: None
  - (iv) Bankruptcy or other convictions: None
- (f) **RUSSELL ALLAN HIGGINS, AO BEc FAICD (Director since 2005)**
  - (i) Residential Address: 127 Schlich Street  
Yarralumla ACT 2600
  - (ii) Business experience: Refer to Annexure G.
  - (iii) Directorships of publicly listed or traded companies: Refer to Annexure G.
  - (iv) Bankruptcy or other convictions: None
- (g) **GILLIAN LOUISE KIRKUP, MAICD (Director since 2005)**
  - (i) Residential Address: Farm 1690  
Kirkup Road  
Gogeldrie NSW 2705
  - (ii) Business experience: Refer to Annexure G.
  - (iii) Directorships of publicly listed or traded companies: None
  - (iv) Bankruptcy or other convictions: None
- (h) **GRANT FREDERICK LATTA, AM FAICD FAIM ASA/CPA AAMI MBA  
DipBus DipEng (Director since 1999)**
  - (i) Residential Address: 174 Wattle Valley Road  
Camberwell VIC 3124
  - (ii) Business experience: Refer to Annexure G.
  - (iii) Directorships of publicly listed or traded companies: Refer to Annexure G.
  - (iv) Bankruptcy or other convictions: None
- (i) **NORMAN McALLISTER, Dip App Sc Ag FAICD (Director since 1997)**
  - (i) Residential Address: 269 Pound Street  
Deniliquin NSW 2710
  - (ii) Business experience: Refer to Annexure G.
  - (iii) Directorships of publicly listed or traded companies: None

- (iv) Bankruptcy or other convictions: None
- (j) **ALAN DAVID WALSH**, FAICD (Director since 2000)
  - (i) Residential Address: “Archdale”  
Deniliquin NSW 2710
  - (ii) Business experience: Refer to Annexure G.
  - (iii) Directorships of publicly listed or traded companies: None
  - (iv) Bankruptcy or other convictions: None

## 12.2 Corporate Management Team

The details of the corporate management team of the Company are set out below.

- (a) **GARY HELOU BE**, (Hons) M Comm, FAICD, FAIM
  - (i) Position: Chief Executive Officer
  - (ii) Residential Address: 8 Grangewood Place  
West Pennant Hills NSW 2125
  - (iii) Business experience: Refer to Annexure G.
- (b) **CLAUDE CASSAR**, CA F DipBus Studies (Acct)
  - (i) Position: Chief Financial Officer
  - (ii) Residential Address: 7 Kirkoswald Avenue  
Mosman NSW 2088
  - (iii) Business experience: Refer to Annexure G.
- (c) **MILTON BAZLEY**, BAppSc, BBus, DipExMan
  - (i) Position: General Manager, International Commodity and Trading
  - (ii) Residential Address: 64B Ponsonby Parade  
Seaforth NSW 2092
  - (iii) Business experience: Refer to Annexure G.
- (d) **MANDY DELGIGANTE**, B Comm, CPA
  - (i) Position: Company Secretary
  - (ii) Residential Address: 1 Waratah Street  
Leeton NSW 2705
  - (iii) Business experience: Refer to Annexure G.
- (e) **GRAHAM HARVEY**, BAppSc, MBA
  - (i) Position: General Manager, Operations
  - (ii) Residential Address: 17 Sanctuary Point Road  
West Pennant Hills NSW 2125
  - (iii) Business experience: Refer to Annexure G.

- (f) **MIKE HEDDITCH**, BSc Agr Dip Ed ACI
- (i) Position: General Manager, Grower Services
  - (ii) Residential Address: 39 Wood Road  
Griffith NSW 2680
  - (iii) Business experience: Refer to Annexure G.
- (g) **DAVID KELDIE**, BA
- (i) Position: General Manager, Sales and Marketing, Domestic
  - (ii) Residential Address: 14 Kamilaroi Road  
Bayview NSW 2104
  - (iii) Business experience: Refer to Annexure G.

**13. Sponsors, bankers, etc.**

- (a) Sponsor: ABN AMRO Morgans Limited
- Address: Level 29  
88 Phillip St  
Sydney NSW 2000
- (b) Financial advisers: Not applicable.
- (c) Principal Bankers: Commonwealth Bank of Australia
- Address: 52 Martin Place  
Sydney NSW 2000
- (d) Nominated Adviser: Dibbs Abbott Stillman Lawyers
- Address: Level 8 Angel Place  
123 Pitt Street  
Sydney NSW 2000
- (e) Share Registrar/transfer agent:
- Address: Link Market Services Limited  
680 George Street  
Sydney NSW 2000
- (f) Solicitors: Dibbs Abbott Stillman Lawyers
- Address: Level 8 Angel Place  
123 Pitt Street  
Sydney NSW 2000
- (g) Auditors: PricewaterhouseCoopers
- Address: Darling Park Tower 2  
201 Sussex Street  
Sydney NSW 1171
- Qualifications: Chartered Accountants

**14. Statement of non-compliance**

Refer to our letter dated on or about the date of this application letter in relation to amendments required to the constitution of Ricegrowers Limited.

Refer to our letter dated 23 February 2007 in relation to a waiver request for the Ricegrowers Limited Dividend Reinvestment Plan.

**15. Declaration**

To the best of Ricegrowers' knowledge, information and belief:

- (a) save as specified in this application letter, all the qualifications for listing set out in Chapter 3 of Section IIA of the Listing Rules have, in so far as applicable and required to be met and fulfilled prior to application, been met or fulfilled in relation to Ricegrowers and the securities of Ricegrowers the subject of the application; and
- (b) there are no other facts bearing Ricegrowers' application for listing which, in Ricegrowers' opinion, should be disclosed to the Exchange.

Signed for and on behalf of Ricegrowers Limited

.....  
Mandy Del Gigante  
Company Secretary

**ANNEXURE A**  
**DIRECTORS SHAREHOLDINGS<sup>1</sup>**

Sent electronically to Mr Ian Craig on 8 February 2007.

---

<sup>1</sup> Note: Ricegrowers Limited issued a bonus issue of shares in December 2005. Therefore, no consideration was paid for these bonus shares. In October 2006 shareholders were able to participate in an offer of B Class Shares in Ricegrowers Limited by applying Rice Bonds they owned or a Rice Marketing Board Equity Rollover Payment ("RMB Equity"). It is noted that the attached shareholding report shows in some instance that no consideration has been paid by the relevant shareholder for these shares. These shares have been issued with no amount payable until the RMB Equity is paid in July 2007. These shares are not entitled to dividends until the issue price is paid.



**ANNEXURE B**

**DETAILS OF ALL SHAREHOLDINGS<sup>2</sup>**

Sent electronically to Mr Ian Craig on 8 February 2007.

---

<sup>2</sup> Note: Ricegrowers Limited issued a bonus issue of shares in December 2005. Therefore, no consideration was paid for these bonus shares. In October 2006 shareholders were able to participate in an offer of B Class Shares in Ricegrowers Limited by applying Rice Bonds they owned or a Rice Marketing Board Equity Rollover Payment ("RMB Equity"). It is noted that the attached shareholding report shows in some instance that no consideration has been paid by the relevant shareholder for these shares. These shares have been issued with no amount payable until the RMB Equity is paid in July 2007. These shares are not entitled to dividends until the issue price is paid.

ANNEXURE C

**CONSOLIDATED INCOME STATEMENT FOR HALF YEAR ENDED 31 OCTOBER 2006 AND  
YEARS ENDED 30 APRIL 2006, 2005, 2004**

	Half year Ended 31 October 2006 \$000's	Year Ended 30 April 2006 \$000's	Year Ended 30 April 2005 \$000's	Year Ended 30 April 2004 \$000's
Sales Revenue	349,253	603,016	649,971	661,929
Other Revenue	936	2,484	3,038	2,192
<b>Revenue from continuing operations</b>	<b>350,189</b>	<b>605,500</b>	<b>653,009</b>	<b>664,121</b>
Other Income	35	1,406	123	1,746
Changes in inventories of finished goods	10,468	729	19,930	984
Raw Materials and consumables used	(210,022)	(385,666)	(401,597)	(410,946)
Employee benefits expense	(38,150)	(65,282)	(71,667)	(68,573)
Other expenses	(86,856)	(120,466)	(148,023)	(132,162)
Share of net profit of associate accounted using the equity method	306	390	319	(10)
<b>Profit before depreciation, amortisation and finance costs</b>	<b>25,970</b>	<b>36,611</b>	<b>52,094</b>	<b>55,160</b>
Depreciation & amortisation expenses	(9,633)	(13,703)	(13,812)	(14,036)
Finance Costs	(12,744)	(15,829)	(14,958)	(15,805)
<b>Profit before income tax</b>	<b>3,593</b>	<b>7,079</b>	<b>23,324</b>	<b>25,319</b>
Income tax (expense)/benefit	(788)	(349)	(879)	(1,174)
<b>Profit</b>	<b>2,805</b>	<b>6,730</b>	<b>22,445</b>	<b>24,145</b>
(Profit)/loss attributable to minority interests	(43)	(40)	(300)	(859)
<b>Profit attributable to members of Ricegrowers Limited</b>	<b>2,762</b>	<b>6,690</b>	<b>22,145</b>	<b>23,286</b>

\* The main reason for the reduction in profit after 2005 is that the Other Activities and Shareholder bonuses are now included within raw materials and consumables used (2005: \$22,944,000, 2004: \$15,844,000). Prior to 2006 these items were treated as appropriations from Net Profit.

---

<b>Co-operative / B Class Shares on issue (000's)</b>	<b>24,094</b>	<b>23,359</b>	<b>15,725</b>	<b>16,090</b>
	<b>\$</b>	<b>\$</b>	<b>\$</b>	<b>\$</b>
<b>Earnings per Share</b>	<b>0.11</b>	<b>0.29</b>	<b>1.41</b>	<b>1.45</b>

---

ANNEXURE D

RICEGROWERS LIMITED'S CONSOLIDATED GROUP - BALANCE SHEET

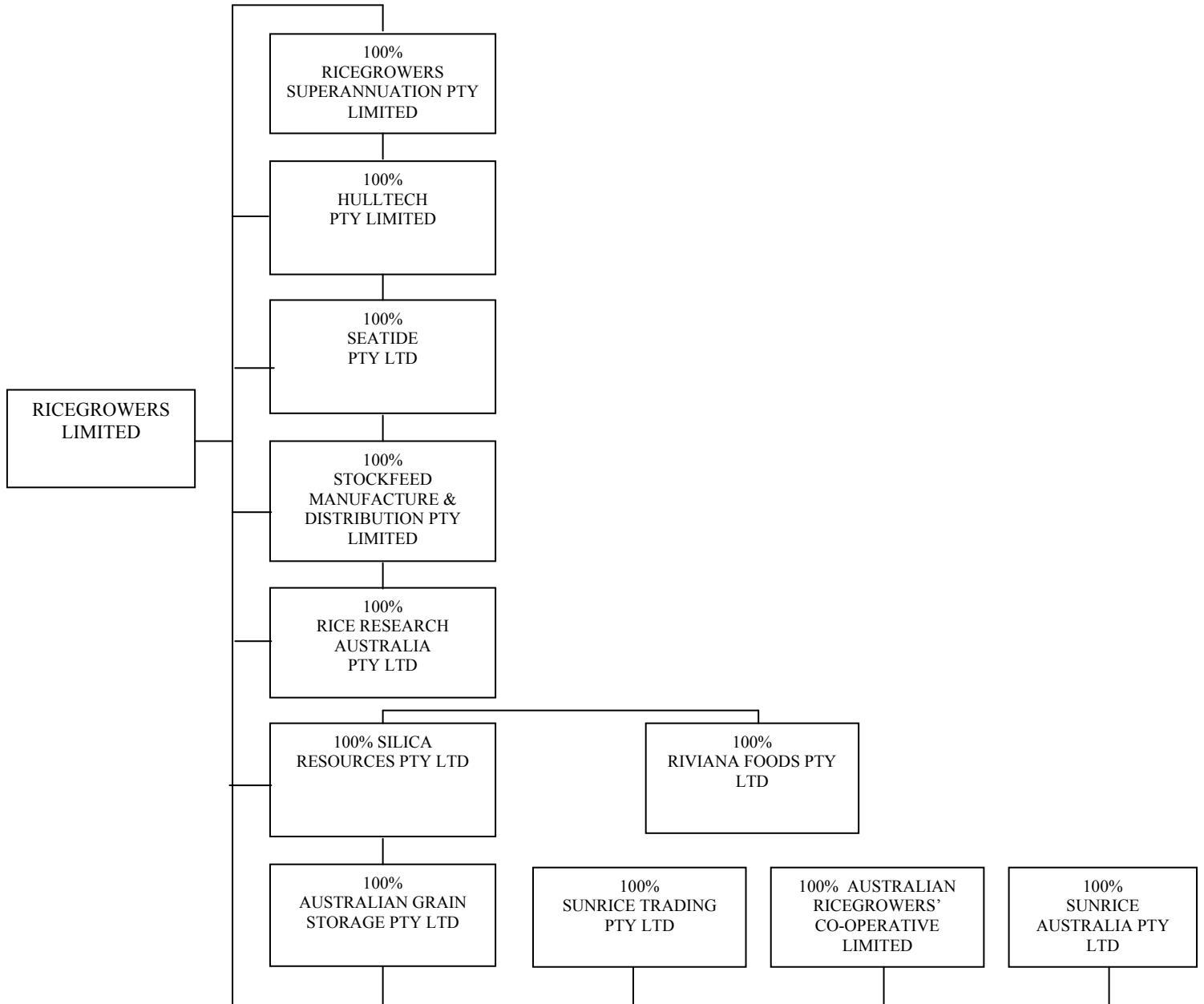
	31 Oct. 2006 \$'000	30 April 2006 \$'000	30 April 2005 \$'000	30 April 2004 \$'000
<b>Current Assets</b>				
Cash and cash equivalents	6,097	3,519	2,811	4,992
Receivables	86,587	77,221	74,601	72,898
Inventories	272,346	384,577	193,811	221,702
Derivative financial instruments	2,054	2,054	-	-
<b>Total Current Assets</b>	<b>365,454</b>	<b>467,371</b>	<b>271,223</b>	<b>299,592</b>
<b>Non Current Assets</b>				
Receivables	1,020	-	-	-
Available-for-sale financial assets	336	394	-	-
Inventories	-	-	1,052	-
Other financial assets	684	556	612	713
Property, plant and equipment	258,949	136,738	136,738	139,932
Investment properties	5,075	7,475	6,725	6,675
Intangible assets	7,997	5,772	5,854	4,984
Deferred tax assets	20,482	22,075	22,555	26,194
Investments accounted for using the equity method	4,593	4,287	3,897	3,578
<b>Total Non Current Assets</b>	<b>299,136</b>	<b>177,297</b>	<b>177,433</b>	<b>182,076</b>
<b>TOTAL ASSETS</b>	<b>664,590</b>	<b>644,668</b>	<b>448,656</b>	<b>481,668</b>
<b>Current Liabilities</b>				
Payables	55,032	49,671	43,210	51,141
Grower payables	96,814	109,636	66,992	76,486
Borrowings	158,061	176,728	61,004	49,866
Current tax liabilities	-	-	-	1,988
Provisions	10,573	8,855	11,417	10,177
Derivative financials instruments	311	186	-	-
<b>Total Current Liabilities</b>	<b>320,791</b>	<b>345,076</b>	<b>182,623</b>	<b>189,658</b>
<b>Non Current liabilities</b>				
Payables	86,118	1,863	1,799	1,950
Grower payables	-	55,670	18,132	30,322
Borrowings	151,166	135,101	144,267	147,362
Deferred tax liabilities	4,784	6,933	6,594	9,928
Provisions	2,642	3,008	2,633	1,709
<b>Total Non Current Liabilities</b>	<b>244,710</b>	<b>202,575</b>	<b>173,425</b>	<b>191,271</b>
<b>TOTAL LIABILITIES</b>	<b>565,501</b>	<b>547,651</b>	<b>356,048</b>	<b>380,928</b>

<b>NET ASSETS</b>	<b>99,089</b>	<b>97,017</b>	<b>92,608</b>	<b>100,740</b>
	<b>31 Oct. 2006 \$'000</b>	<b>30 April 2006 \$'000</b>	<b>30 April 2005 \$'000</b>	<b>30 April 2004 \$'000</b>
<b>Equity</b>				
Contributed Capital	32,560	31,036	31,449	32,180
Reserves	20,678	22,602	19,929	20,878
Retained profit	41,023	38,261	36,593	42,425
Total parent equity interest	94,261	91,899	87,971	95,483
Minority interest	4,828	5,118	4,637	5,257
<b>TOTAL EQUITY</b>	<b>99,089</b>	<b>97,017</b>	<b>92,608</b>	<b>100,740</b>
Co-operative / B Class Shares on issue (000's)	24,094	23,359	15,725	16,090
<b>NET TANGIBLE ASSET BACKING PER SHARE *</b>	<b>\$3.78</b>	<b>\$3.91</b>	<b>\$5.52</b>	<b>\$5.95</b>

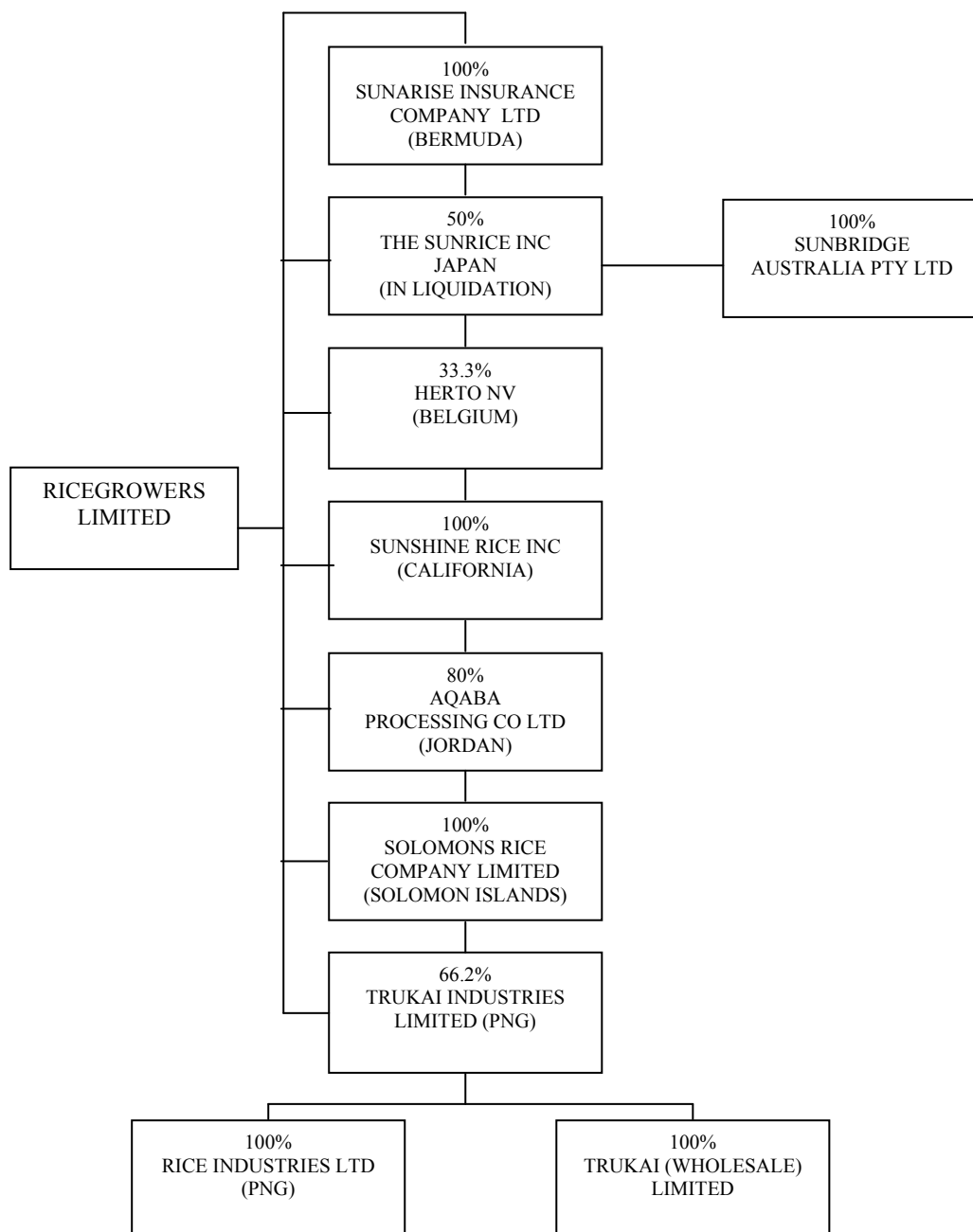
\* Net Tangible Asset Backing Per Share represents (Total Equity – Intangible Assets)/ Number of Issued Shares

ANNEXURE E

**RICEGROWERS LIMITED DOMESTIC SUBSIDIARIES AS AT JANUARY 2007**



**RICEGROWERS LIMITED OVERSEAS SUBSIDIARIES AS AT JANUARY 2007**



ANNEXURE F

RICEGROWERS LIMITED AND ITS CHILD ENTITIES' PROPERTY DETAILS

Ricegrowers Limited and Australian Grain Storage Pty Ltd

Location	Land Area	Description of Land and Buildings	Owned or Leased	Annual Rental for last 3 Years			Rental for Average Term Of Years
				2004	2005	2006	
Benerembah Woodside Rd	14.85 ha	5 Rice Storage Sheds (84,000mt) Amenities and Weighbridge	Owned	NA	NA	NA	NA
Blighty Cnr Riverina Hwy and Lakers Rd	12.44ha	2 Rice Storage Sheds (29,000mt) Amenities and Weighbridge	Owned	NA	NA	NA	NA
Burraboi Wakool Rd	4.98ha	7 Rice Storage Sheds (88,000mt) Amenities and Weighbridge	Leased	3,190	3,190	3,190	3,190
Caldwell Rosella St	3.44ha	4 Rice Storage Sheds (36,000mt) Amenities and Weighbridge	Leased	2,310	2,310	2,310	2,310
	4.886ha	Vacant Land	Owned	NA	NA	NA	NA
Cobden Cnr Graylands & Warrnambool Rds	3.85ha	Stockfeed Plant, Packing and Warehouse complex	Owned	NA	NA	NA	NA
Coleambally Jimmy Cull Rd	12.40ha	7 Rice Storage Sheds (67,000mt) Amenities and Weighbridge	Owned	NA	NA	NA	NA
	207ha	Hull Farm	Owned	NA	NA	NA	NA
Deniliquin Sale Yards Rd	35ha	13 Rice Storage Sheds (253,000mt) Amenities and Weighbridge	Owned	NA	NA	NA	NA
		Rice Milling Packing and Warehouse complex					
		Seed Grading Facility					
	418.5ha	Hull Farm	Owned	NA	NA	NA	NA
Emery Kidman Way	19.7ha	7 Rice Storage Sheds (120,000mt) Amenities and Weighbridge	Owned	NA	NA	NA	NA



Location	Land Area	Description of Land and Buildings	Owned or Leased	Annual Rental for last 3 Years			Rental for Average Term Of Years
				2004	2005	2006	
Finley Rice Mill Road	8.41ha	3 Rice Storage Sheds (96,000mt) Amenities and Weighbridge	Lease in Perpetuity	4,080	4,255	4,621	4,319
Newell Hwy	105.6ha	Farm land	Owned	NA	NA	NA	NA
Gogeldrie Whitton Ave	9.96ha	4 Rice Storage Sheds (51,800mt) Amenities and Weighbridge	Owned	NA	NA	NA	NA
Griffith Banna Ave	3.712ha	3 Rice Storage Sheds (33,000mt) Amenities and Weighbridge Redundant Rice Milling complex Redundant Rice Flour Milling complex Warehouse complex	Owned	NA	NA	NA	NA
Moon Rd, Murrumbidgee	393ha	Hull Dump	Owned	NA	NA	NA	NA
Hay Cobb Hwy	20.25ha	2 Rice Storage Sheds (52,000mt) Amenities and Weighbridge	Owned	NA	NA	NA	NA
Hogan Berrigan Rd	14.0ha	3 Rice Storage Sheds (67,000mt) Amenities and Weighbridge	Owned	NA	NA	NA	NA
Leeton Calrose Street and Railway Ave	18.17ha	Rice Milling, Packing and Warehouse complex Rice Flour Milling, Packing and Warehouse complex 1 Rice Storage Sheds (11,000mt) Laboratory Vacant Land Stockfeed Plant, Packing and Warehouse complex	Owned	NA	NA	NA	NA
Leeton Wamoon Ave	7.33ha	Specialty Rice Food Production complex Warehouse complex Laboratory	Owned	NA	NA	NA	NA
Leeton	1708m2	Warehouse complex	Leased	46,930	46,930	46,930	46,930

Location	Land Area	Description of Land and Buildings	Owned or Leased	Annual Rental for last 3 Years			Rental for Average Term Of Years
				2004	2005	2006	
Dunn Ave							
Leeton Yanco Ave	4.047ha	Office complex	Owned	NA	NA	NA	NA
Leeton 77 Kurrajong Ave	NA	2 Residential Units	Owned	NA	NA	NA	NA
Leeton 9 Karri Road	NA	Residential House	Owned	NA	NA	NA	NA
Leeton 52 Tulipwood Road	NA	Residential House	Owned	NA	NA	NA	NA
Leeton Glenelg, Narrandera	508.7ha	Hull Dump	Owned	NA	NA	NA	NA
Melbourne Salmon St, Port Melbourne	120m2	Office space (note: increased to 250m2 in June 2006 for an additional \$33,660 per annum)	Leased	28,590	28,590	28,590	28,590
Moulamein Tchelery Rd	4.6ha	4 Rice Storage Sheds (59,000mt) Amenities and Weighbridge	Leased	11,275	10,835	10,835	NA
	3,591m2	Vacant Land	Owned	NA	NA	NA	NA
Murrumbidgee Shepherd Rd	6.26ha	2 Rice Storage Sheds (28,000mt) Amenities and Weighbridge	Owned	NA	NA	NA	NA
		Vacant land					
Sydney Market St	1134m2	Office space	Leased	511,443	502,840	504,748	506,344
Tongala 2065 Finlay Rd	6.0ha	Stock Feed Complex	Owned	NA	NA	NA	NA

Location	Land Area	Description of Land and Buildings	Owned or Leased	Annual Rental for last 3 Years			Rental for Average Term Of Years
				2004	2005	2006	
Memorial Dr	NA	Residential House	Owned	NA	NA	NA	NA
Walsh	7.449ha	2 Rice Storage Sheds (43,500mt) Amenities and Weighbridge	Owned	NA	NA	NA	NA
Whitton	13.037ha	7 Rice Storage Sheds (25,000mt) (part) Amenities and Weighbridge Seed Grading Facility	Owned	NA	NA	NA	NA
	1.379ha	7 Rice Storage Sheds (25,000mt) (part)	Leased	3,025	3,176	3,335	3,179
Willbriggie	7.45ha	4 Rice Storage Sheds (50,000mt) Amenities and Weighbridge	Owned	NA	NA	NA	NA
Yenda Doug McWilliam Rd	4.0ha	Redundant Rice Milling complex Warehouse	Owned	NA	NA	NA	NA
Yenda Barracks Rd	7.264ha	5 Rice Storage Sheds (51,000mt) Amenities and Weighbridge	Lease in Perpetuity	8,100	8,279	10,270	8,883

**Rice Research Australia Pty Ltd**

Location	Land Area	Description of Land and Buildings	Owned or Leased	Annual Rental for last 3 Years			Rental for Average Term Of Years
				2004	2005	2006	
"Old Coree" Conargo Road, JERILDERIE. 2716	1830 Ha	460 Hectares of Landformed Irrigation	Leased				
		1370 Hectares of Native Bushland	Leased				
		1 Large Brick Homestead	Leased				
		1 Machinery Shed	Leased				
		1 Workshop	Leased	71,096.00	118,374.00	111,248.00	100,239.33
		2 Transportable Houses Seed Shed Complex	Owned Owned				

**Riviana Foods Pty Ltd**

<b>Location</b>	<b>Land Area</b>	<b>Description of Land and Buildings</b>	<b>Owned or Leased</b>	<b>Annual Rental for last 3 Years</b>			<b>Rental for Average Term Of Years</b>
5 Corporate Ave Rowville Vic	4100 sq.mtr	Head Office/Sales Office Warehouse	Leased	339,228	349,408	359,892	349,509
17 Kelletts Rd Rowville Vic	4650 sq.mtr	Manufacturing Plant/Office	Owned	-	-	-	N/A
13 Kelletts Rd Rowville Vic	2900 sq.mtr	Rice Manufacturing/Packing Plant	Owned	-	-	-	N/A
15 Rocco Drive Scoresby Vic	1480 sq.mtr	Warehouse	Leased	63,747	84,996	84,996	77,913
15-16 Ormsby Place Wetherill Park NSW	5440 sq.mtr	New Sales Office/Warehouse	Leased		255,368	429,648	228,338
17 Noosa Street Heathwood Qld	5970 sq.mtr	Sales Office/Warehouse	Leased	146,160	152,918	204,110	167,729
16 Modal Crescent Canning Vale Wa	4500 sq.mtr	Sales Office/Warehouse	Leased	86,996	90,988	224,767	134,251
18 Production Street	14,400 sq.mtr	Office/Vinegar Manufacturing Plant	Leased	-	-	-	-

**Trukai**

<b>Location</b>	<b>Land Area</b>	<b>Description of Land and Buildings</b>	<b>Owned or Leased</b>	<b>Annual Rental for last 3 Years</b>			<b>Rental for Average Term Of Years</b>
				<b>2004</b>	<b>2005</b>	<b>2006</b>	
Hagen Wahgi Parade	2068.5 sq mtr	Rice Terminal Complex	Leased	8,420.00	8,420.00	8,420.00	8,420.00
Kavieng Wharf Road	3574 sq mtr	Rice Terminal Complex	Leased	1,025.00	1,025.00	1,025.04	1,025.01
Kimbe Lot 6 Sec17	3000 sq mtr	Rice Terminal Complex	Leased	560.00	560.00	560.00	560.00
Lae Erica Street	6,914 ha	Industrial Complex	Leased	4,750.00	4,750.00	4,750.00	4,750.00
Lae Airways Avenue	1869sq mtr	Residential - 4 units	Leased	2,000.00	2,000.00	2,000.04	2,000.01
Lae Gurney Street	1336sq mtr	Residential - 4 units	Leased	1,950.00	1,950.00	1,950.00	1,950.00
Lae Mataram & Montoro Street	14924 sq mtr	Head Office and Factory Complex	Leased	11,300.04	11,300.04	11,300.04	11,300.04
Lae Mataram & Marsina Street	13450 sq mtr	Warehouse and Agribusiness & Office	Leased	7,250.00	7,250.00	7,250.00	7,250.00
Lae Parer Street	1769 sq mtr	Residence House	Leased	1,550.04	1,550.04	1,550.04	1,550.04
Madang Bougainvillea Drive	4050 sq mtr	Rice Terminal Complex	Leased	1,210.00	1,210.00	1,210.08	1,210.03
Moresby Lot 13 Sec 36 Lawes Road	2,3106 ha	Rice Terminal Complex	Leased	16800	16800	34650	22,750.00
Popondetta Killerton Road	2027sq mtr	Rice Terminal Complex	Leased	75.00	75.00	75.00	75.00
Rabaul Lot 22&23 Sec 63	4135 sq mtr	Rice Terminal Complex	Leased	80.00	230.00	80.04	130.01
Wewak Wharf Road	0.1995 ha	Rice Terminal & Storage Complex	Leased	645.00	645.00	1,085.04	791.68
Lae Lot 7 Section 17 - Ex Kwantung	3300 sq mtr	Storage & Warehouse Complex	Leased	NA	NA	2,190.00	2,190.00
Lae Lot 8 Sec 17 Ex Toba Motors	4500 sq mtr	Rice Terminal & Storage Complex	Leased	NA	NA	4,100.00	4,100.00
Lae Lot 1 Sec 17 Ex Toba Motors	5600 sq mtr	Rice Terminal & Storage Complex	Leased	NA	NA	4,150.00	4,150.00
Erap Farm Markham Valley	1320.775 ha	Rural buildings & Improvements - Farm	Leased	5,050.00	5,050.00	5,050.00	5,050.00
Valley View Farm Markham Valley	859.01 Ha	Rural buildings & Improvements - Farm	Leased	2,465.00	2,465.00	2,465.00	2,465.00

**Solomons Rice Company  
Limited**

Location	Land Area	Description of Land and Buildings	Owned or Leased	Annual Rental for last 3 Years			Rental for Average Term Of Years
				2004	2005	2006	
Ranadi	0.1807ha	Parcel Number 192-010-026 Warehouse and Office	Leased (1)	900.00	900.00	900.00	900.00
Ranadi	0.9530ha	Parcel Number 192-010-023 Container Yard	Leased (2)	1,150.00	1,150.00	1,150.00	1,150.00
Tandai	0.2724ha	Parcel Number 191-003-077 Duplex	Leased (3)	825.00	825.00	825.00	825.00

(1) 50 years from 01/01/1983

(2) 50 years from 01/01/2002

(3) 50 years from 01/01/1983

**AQABA**

Location	Land Area	Description of Land and Buildings	Owned or Leased	Annual Rental for last 3 Years JDs			Rental for Average Term Of Years
				2004	2005	2006	
Aqaba	NA	Rice Milling, Packing and Warehouse complex	Owned	NA	NA	NA	NA
Aqaba	15,000 m2	Plants Land	Leased	1,000.00	1,000.00	1,000.00	1,000.00
Jwaydeh-Amman	2,400 m2	Warehouse rented for MB fumigation purposes	Leased			48,000.00	48,000.00
Amman	215 m2	Offices	Leased	13,975.00	13,975.00	13,975.00	13,975.00
Aqaba	NA	Residential House	Leased	1,800.00	1,800.00	2,100.00	1,900.00
Aqaba	NA	Residential House	Leased	1,800.00	1,800.00	2,000.00	1,866.67



**HERTO**

Location	Land Area	Description of Land and Buildings	Owned or Leased	Annual Rental for last 3 Years			Rental for Average Term Of Years
				2004	2005	2006	
Zottegem Ballingsweg 10 Belgium	5.5 ha	Production plant for rice cakes (15,000m <sup>2</sup> ) 6 Rice silos - warehouses	Owned	NA	NA	NA	NA

## **ANNEXURE G**

### **DIRECTORS' AND CORPORATE MANAGEMENT TEAM**

#### **PROFILES AND BUSINESS EXPERIENCE**

##### **GERRY LAWSON, LDA MAICD**

Mayrung rice grower. Director since 1985. Chairman since 2001. Directors' Committee: Member, Remuneration. Chairman, Riviana Foods Pty Ltd. Director, Silica Resources Pty Ltd; SunRice Trading Pty Ltd; SunRice Australia Pty Ltd; Riviana (Australia) Pty Ltd; SunArise Insurance Company Limited; Aqaba Processing Company Ltd (Jordan); Herto nv (Belgium); and Sunshine Rice Inc (USA). Member of the Rice Marketing Board. SunRice representative to the Ricegrowers' Association of Australia Inc.

##### **MARK ROBERTSON, MAICD**

Berriquin rice grower. Director since 1996. Deputy Chairman since 2001. Directors' Committees: Chairman, Grower Services; Member, Remuneration, Finance and Audit and Due Diligence. Chairman, Trukai Industries Limited (PNG); Director, Solomons Rice Company Limited (Solomon Islands), Riviana (Australia) Pty Ltd; SunRice Australia Pty Ltd and SunRice Trading Pty Ltd. Member, Rice Industry Co-ordination Committee.

##### **BRUCE BARBER, FAICD Cert Ag**

Warrawidgee rice grower. Director since 1984. Directors' Committees: Member, Finance and Audit, Grower Services and Due Diligence. Director, Rice Research Australia Pty Ltd; Stockfeed Manufacture and Distribution Pty Ltd; Trukai Industries Limited (PNG). Chairman, Solomons Rice Company Limited (Solomon Islands). Member, Rice Industry Co-ordination Committee. Chairman, Benerembah Irrigation District Environment Protection Trust, Director Abitibi Pty Ltd.

##### **NOEL GRAHAM, FAICD**

Caldwell rice grower. Director since 2001. Directors' Committees: Member, Finance and Audit; Grower Services and Due Diligence. Chairman, Rice Marketing Board. Rice Marketing Board representative to Ricegrowers' Association of Australia Inc.

##### **GARY HELOU, BE (Hons) MComm FAICD FAIM**

Director since 2003. Director, Riviana Foods Pty Ltd, Trukai Industries Limited (PNG); Solomons Rice Company Limited (Solomon Islands); Herto nv (Belgium); Aqaba Processing Company (Jordan); and Sunshine Rice Inc (USA). Member, Asia Society AustralAsia Centre; Australian Homegrown Limited.

##### **RUSSELL HIGGINS, AO BEc FAICD**

Director since 2005. Directors' Committees: Member, Finance and Audit and Due Diligence, Director, Australian Pipeline Trust; Australian Biodiesel Group; Chairman, CRC for Coal in Sustainable Development; CSIRO Energy Transformed Flagship Advisory Committee. Former Chairman Snowy Mountains Hydro - Electric Scheme.

##### **GILLIAN KIRKUP, MAICD**

Yanco rice grower. Director since 2005. Directors' Committee: Member, Grower Services. Member, Rice Marketing Board. Member, RIRDC Rice Research and Development Committee. Central Executive Delegate to Ricegrowers' Association of Australia Inc. Director, Murrumbidgee Irrigation Limited. Member Riverina Agricultural Women Steering Committee.

**GRANT F LATTA, AM FAICD FAIM ASA/CPA AAMI MBA DipBus DipEng**

Director since 1999. Directors' Committees: Chairman, Remuneration; Finance and Audit and Due Diligence. Executive Chairman, GCMCorp Pty Ltd. Chairman, Europcar Asia Pacific, Optiscan Imaging Ltd and Kailis and France Foods Pty Ltd. Director, Biota Holdings Ltd and a member of the Australian Competition Tribunal (Federal Court).

**NORM McALLISTER, Dip App Sc Ag FAICD**

Berriquin rice grower. Director since 1997. Chairman, Rice Research Australia Pty Ltd. Director Riviana Foods Pty Ltd, Silica Resources Pty Ltd. Director, Rural Industries Research and Development Corporation. Member, Rice Industry Co-ordination Committee.

**ALAN WALSH, FAICD**

Berriquin and Coleambally rice grower. Director since 2000. Directors' Committee: Member, Grower Services, Director, Rice Research Australia Pty Ltd. Member, Rural Industries Research and Development Corporation, Rice Research and Development Committee. Central Executive Delegate to Ricegrowers' Association of Australia Inc. Secretary, Ricegrowers' Association of Australia Inc (Deniliquin Branch). Delegate to Irrigation Research Extension Committee. Member, Rice Industry Co-ordination Committee.

**GARY HELOU BE, (Hons) M Comm, FAICD, FAIM**

**Chief Executive Officer**

Joined SunRice in 1998 as General Manager, Marketing, and was appointed CEO in October 1999. Extensive experience in the food industry, including ten years experience in Asia holding Executive General Manager roles at Simplot, Indofood and Pacific Dunlop Limited. Director of Riviana Foods Pty Ltd, Trukai Industries Limited, Solomons Rice Company Limited, Herto nv, Aqaba Processing Company Ltd and Sunshine Rice Inc. Member of the Council for Australian-Arab Relations, the Board of Patrons of Australian HomeGrown Limited and the Advisory Council of the Asia Society's AustralAsia Centre.

**CLAUDE CASSAR, CA F DipBus Studies (Acct)**

**Chief Financial Officer**

Joined SunRice in 1999 as Chief Financial Officer. Claude is a Chartered Accountant and has worked in the UK, the US and Asia in a number of senior financial and management positions with multinationals such as Dun and Bradstreet, Young and Rubicam Australia, Dentsu Young and Rubicam Group Singapore, and PricewaterhouseCoopers Australia.

**MILTON BAZLEY, BAppSc, BBus, DipExMan**

**General Manager, International Commodity and Trading**

Joined SunRice in 1994 as Regional Export Manager and became General Manager, International Commodity and Trading in 2002. Responsible for sales to unbranded markets including Japan, South Korea and Taiwan, as well as SunRice's foreign rice trading operations. Over eighteen years experience in bulk commodity-type sales, and has previously held marketing management roles with CSR Limited and P&O Container Lines.

**MANDY DELGIGANTE, B Comm, CPA**

**Company Secretary**

First joined SunRice in 1990 as a Financial Accountant and held a range of positions within the business including Financial Controller and Company Secretary. Following three years as Secretary of the Rice Marketing Board, returned to SunRice in 2005. Prior to working in the rice industry, worked in the commercial and chartered accounting fields for international firms.

**GRAHAM HARVEY, BAppSc, MBA**

**General Manager, Operations**

Joined SunRice in 2000 as General Manager, Operations and is responsible for all grain handling, milling and packing operations. Twenty-one years experience in broad manufacturing and supply chain roles in the fast moving consumer goods (FMCG) and grain-related industries. Previous roles were in operations management at Goodman Fielder.

**MIKE HEDDITCH, BSc Agr Dip Ed ACI**

**General Manager, Grower Services**

Joined SunRice in 1999 as General Manager, Grower Services following a thirteen-year term as Executive Director of The Ricegrowers' Association of Australia. Prior to a career in the rice industry, worked with NSW Agriculture for fourteen years as a District Agronomist, Director of Rice Research Australia Pty Ltd.

**DAVID KELDIE, BA**

**General Manager, Sales and Marketing, Domestic**

Joined SunRice in 2001 as National Sales Manager, Australasia. Appointed General Manager of the Domestic Business unit in 2003. Responsible for sales marketing, research and development and the Specialty Rice Food operations for the Australian and New Zealand markets. Seventeen years experience in the fast moving consumer goods (FMCG) industry. Last appointment was General Manager of the King Island Company.